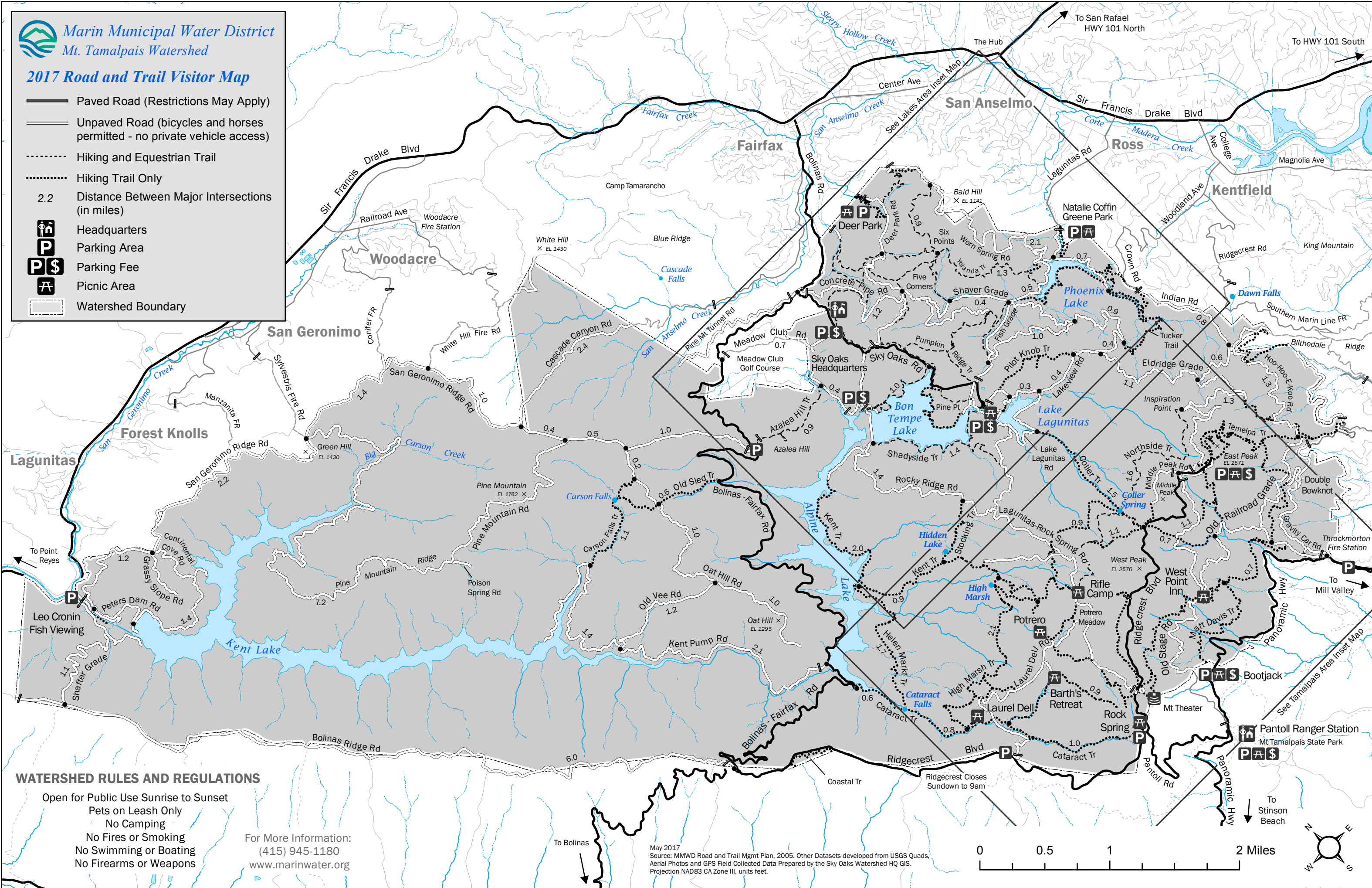




Marin Municipal Water District
Mt. Tamalpais Watershed

2017 Road and Trail Visitor Map

- Paved Road (Restrictions May Apply)
- Unpaved Road (bicycles and horses permitted - no private vehicle access)
- Hiking and Equestrian Trail
- Hiking Trail Only
- 2.2 Distance Between Major Intersections (in miles)
- Headquarters
- Parking Area
- Parking Fee
- Picnic Area
- Watershed Boundary



WATERSHED RULES AND REGULATIONS

- Open for Public Use Sunrise to Sunset
- Pets on Leash Only
- No Camping
- No Fires or Smoking
- No Swimming or Boating
- No Firearms or Weapons

For More Information:
(415) 945-1180
www.marinwater.org

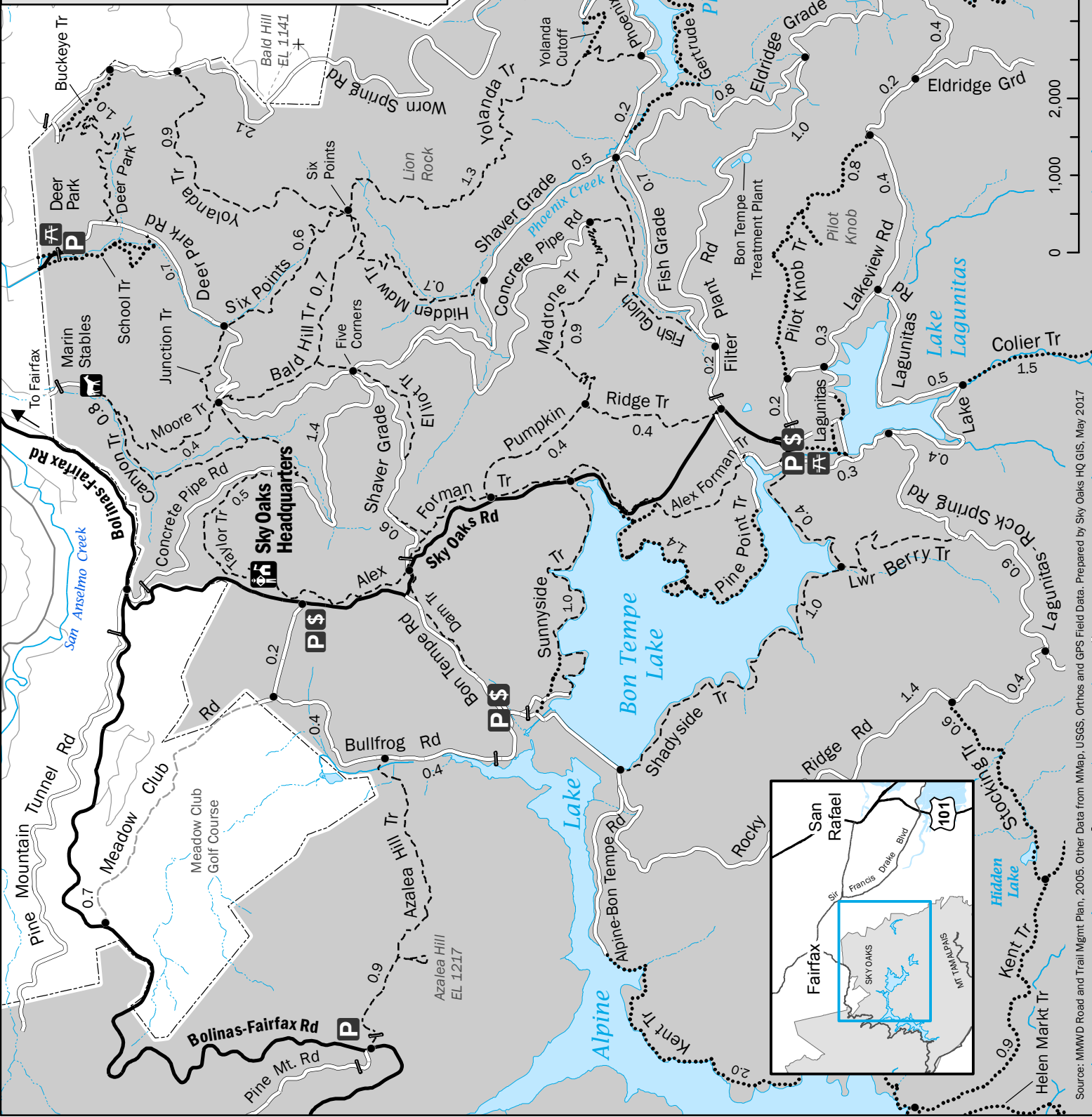
May 2017
Source: MMWD Road and Trail Mgmt Plan, 2005. Other Datasets developed from USGS Quads, Aerial Photos and GPS Field Collected Data Prepared by the Sky Oaks Watershed HQ GIS. Projection NAD83 CA Zone III, units feet.



THE LAKES AREA
2017 Road and Trail Visitor Map
Marin Municipal Water District
Mt. Tamalpais Watershed

- Paved Road (Restrictions May Apply)
- Unpaved Road (bicycles and horses permitted - no private vehicle access)
- Hiking and Equestrian Trail
- Hiking Trail Only
- Miles Between Major Intersections
- Headquarters
- Parking Area
- Parking Fee
- Picnic Area

Information: (415) 945-1180
www.marinwater.org

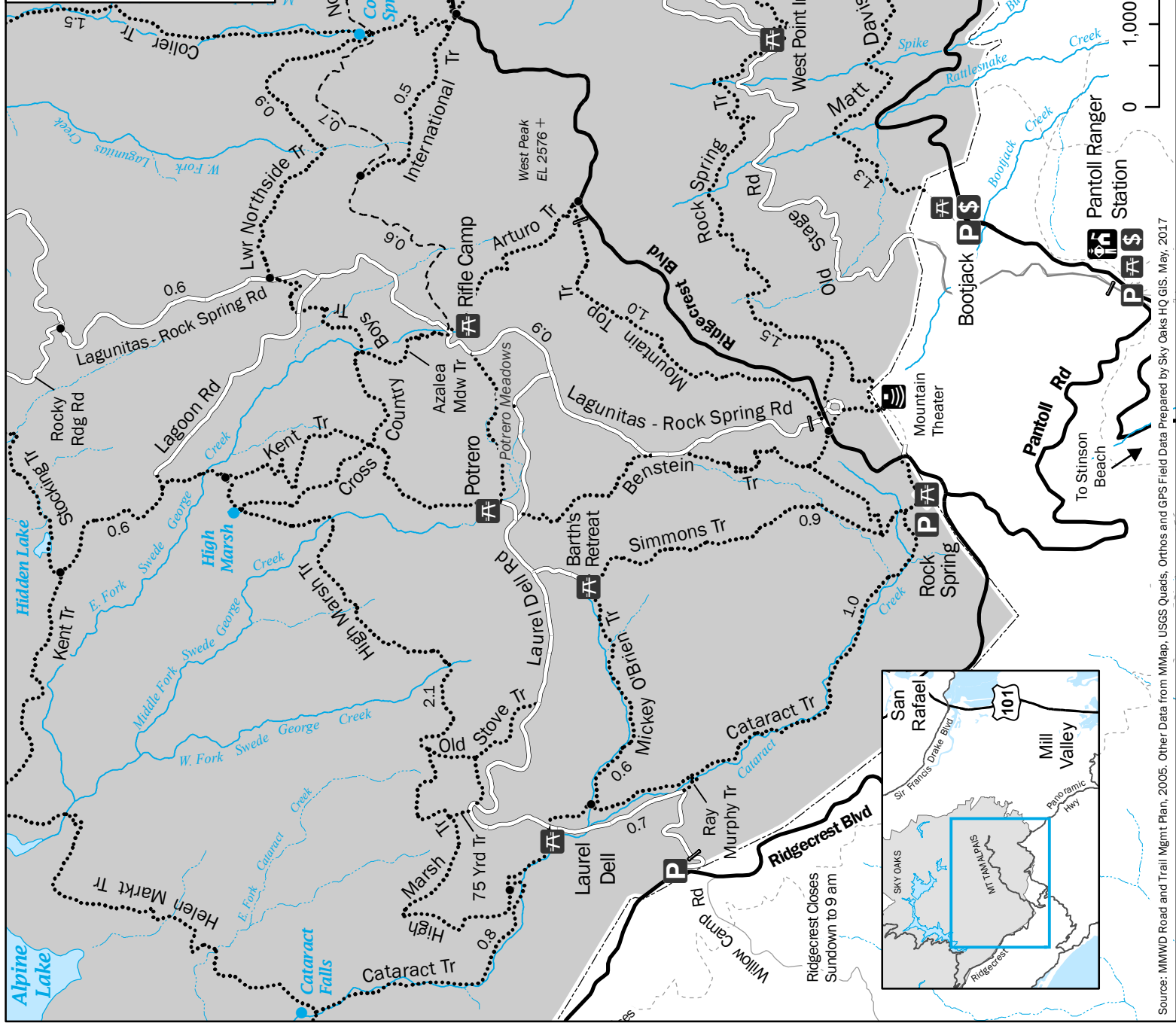


Source: MMWD Road and Trail Mgmt Plan, 2005. Other Data from MMap, USGS, Orthos and GPS Field Data. Prepared by Sky Oaks HQ GIS, May 2017

MT TAMALPAIS AREA
2017 Road and Trail Visitor Map
Marin Municipal Water District - Mt. Tamalpais Watershed

- Headquarters
- Parking Area
- Parking Fee
- Picnic Area
- Watershed Boundary
- Miles Between Major Intersections

Information: (415) 945-1180
www.marinwater.org



Source: MMWD Road and Trail Mgmt Plan, 2005. Other Data from MMap, USGS Quads, Orthos and GPS Field Data Prepared by Sky Oaks HQ GIS, May 2017