

Water Production and Storage Report

June 4, 2019



MARIN MUNICIPAL
WATER DISTRICT



Water Production & Stream Releases

Fiscal Year Potable Water Production	Amount (AF)	Difference
Current Fiscal Year	22,195	--
Last Fiscal Year	22,794	-3%
Stream Releases	Amount (AF)	
Stream Releases to Lagunitas and Walker Creeks	9,174	



7-Day Average Daily Production and Stream Releases

Potable Water Production	Amount (mgd)	Difference
Current	24.03	N/A
Last Year	26.96	-10.9%
Daily Stream Releases	Amount (mgd)	
Stream Releases to Lagunitas and Walker Creeks	6.45	



June 4, 2019 Fiscal Year Lake Lagunitas Precipitation

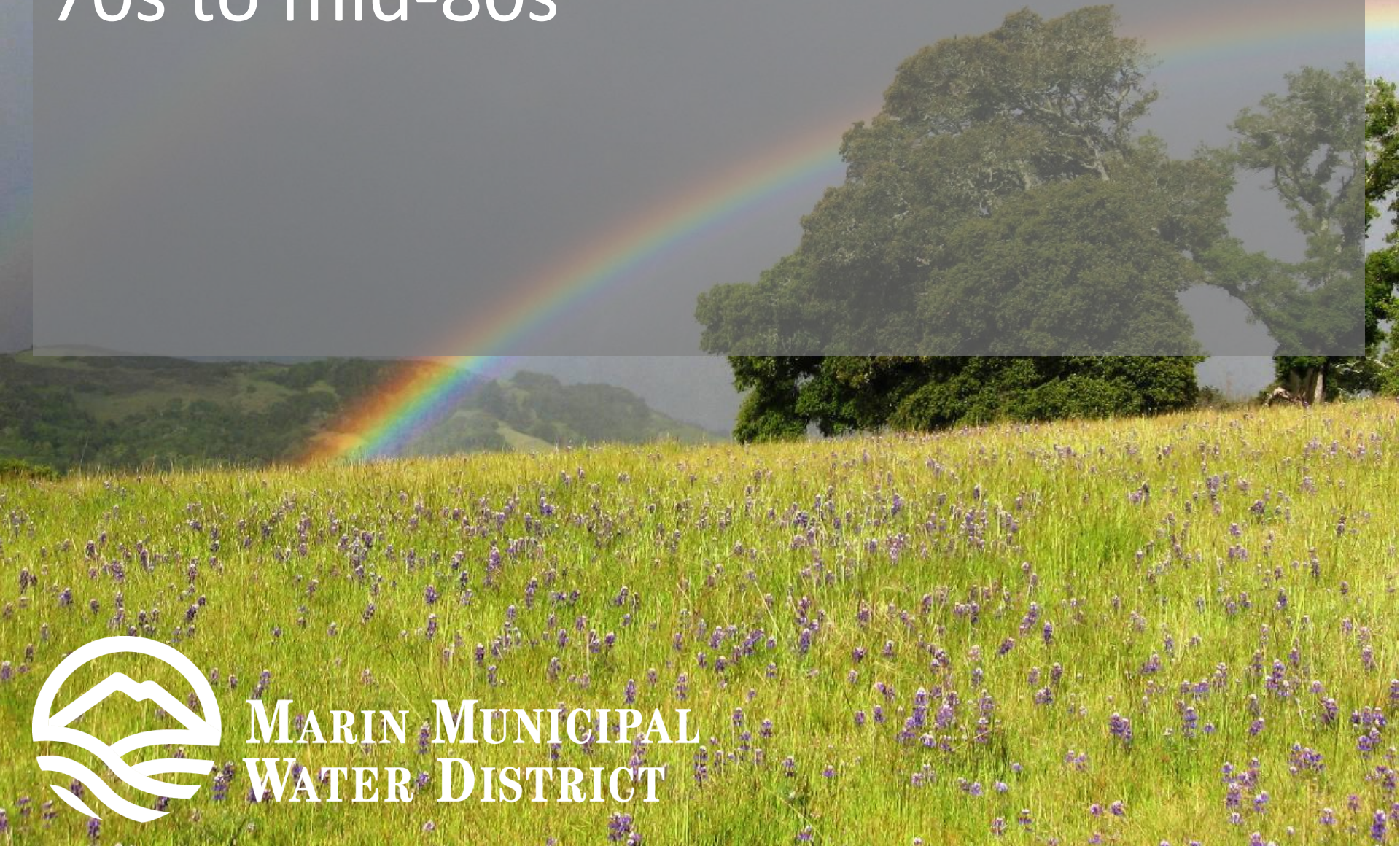
Rainfall	Amount (inches)
Current Fiscal Year	74.03
Last Fiscal Year	38.89
Historical Average	52.21



Reservoir Storage (6/4/19)

Reservoir	Current Storage (AF)	Maximum Storage (AF)	Percent of Maximum Storage	Percent of Normal Storage
Lagunitas	350	350	100%	--
Bon Tempe	3,987	4,017	99%	--
Alpine	8,891	8,891	100%	--
Kent	32,878	32,895	100%	--
Nicasio	22,386	22,430	100%	--
Phoenix	411	411	100%	--
Soulajule	10,572	10,572	100%	--
Total	78,475	79,566	100%	114%
Lake Sonoma (SCWA)	247,052	245,000	101%	108%

- Partly cloudy with highs in the mid-70s to mid-80s



**MARIN MUNICIPAL
WATER DISTRICT**