

Water Production and Storage Report

August 6, 2019



MARIN MUNICIPAL
WATER DISTRICT



7-Day Average Daily Production and Stream Releases

Potable Water Production	Amount (mgd)	Difference
Current	30.57	N/A
Last Year	29.89	2.3%
Daily Stream Releases	Amount (mgd)	
Stream Releases to Lagunitas and Walker Creeks	7.14	



Water Production & Stream Releases

Fiscal Year Potable Water Production	Amount (AF)	Difference
Current Fiscal Year	3,322	--
Last Fiscal Year	3,261	2%
Stream Releases	Amount (AF)	
Stream Releases to Lagunitas and Walker Creeks	717	



August 6, 2019 Fiscal Year Lake Lagunitas Precipitation

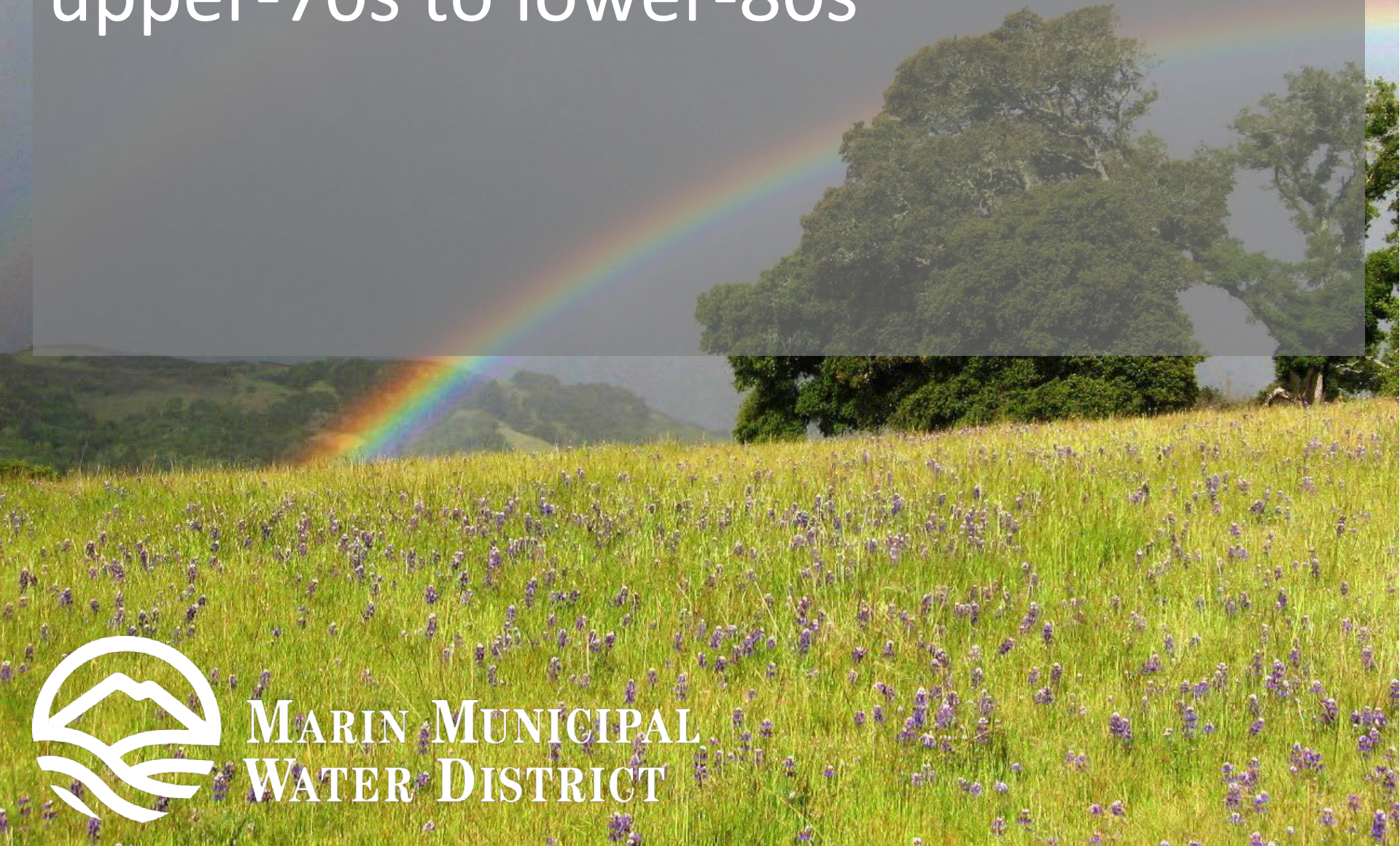
Rainfall	Amount (inches)
Current Fiscal Year	0.00
Last Fiscal Year	0.00
Historical Average	0.07



Reservoir Storage (8/6/19)

Reservoir	Current Storage (AF)	Maximum Storage (AF)	Percent of Maximum Storage	Percent of Normal Storage
Lagunitas	350	350	100%	--
Bon Tempe	3,923	4,017	98%	--
Alpine	7,702	8,891	87%	--
Kent	32,145	32,895	98%	--
Nicasio	18,860	22,430	84%	--
Phoenix	407	411	99%	--
Soulajule	9,773	10,572	92%	--
Total	73,160	79,566	92%	118%
Lake Sonoma (SCWA)	232,571	245,000	95%	109%

- Partly cloudy with highs in the upper-70s to lower-80s



**MARIN MUNICIPAL
WATER DISTRICT**



Lagunitas Creek Instream Flow Requirements (non-dry years)

Dates	Requirements
Jan 1 – Mar 15	25 cfs continuously; 3-days 35 cfs, pulse flows on Jan & Feb 1
Mar 16 – 31	20 cfs (12.9 MGD)
April	16 cfs
May 1 – June 15	12 cfs
June 16 – Oct 31	8 cfs
Nov 1 – Jan 1	Increase to 20 cfs w/first storm; 3-day pulse flows of 35 cfs on Nov 15 & Dec 1



Walker Creek Instream Flow

Dates	Requirement
January	20 cfs if storage > 5,000 AF; 10 cfs if storage is 3,500 to 5,000 AF
February	20 cfs if storage > 6,500; 10 cfs if storage is 4,400 to 6,500 AF
March	20 cfs if storage > 7,900 AF; 10 cfs if storage is 5,400 to 7,900 AF
April	50% of March flows
May 1 – Jan 1	5 cfs if storage on prior May 1 > 8,500 AF; 2 cfs if storage on prior May 1 6,000 to 8,500 AF
Min flow of 0.5 cfs if storage below minimum levels.	



August 6, 2019

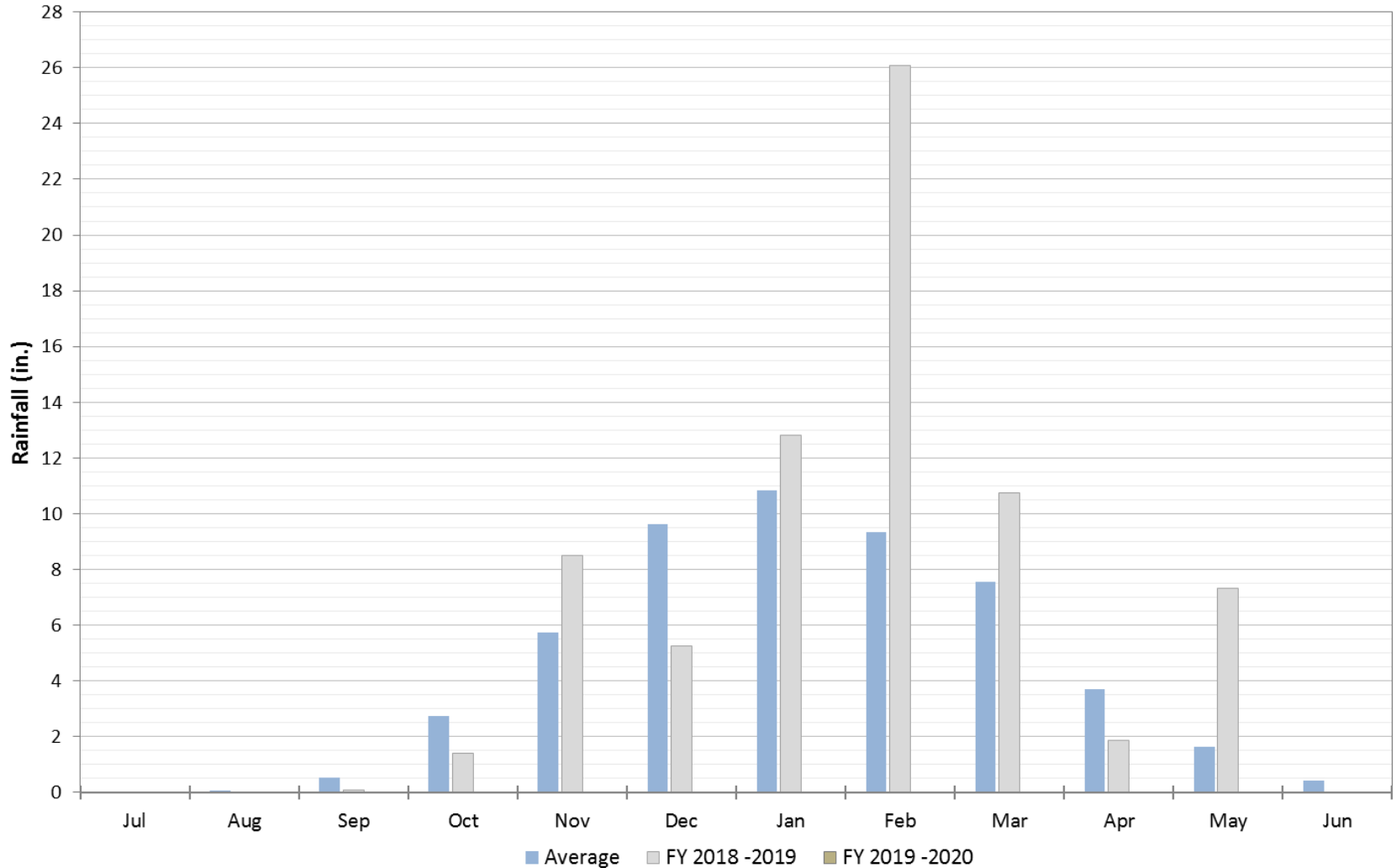
Reservoir Storage and Action

Parameter	Storage Amount (AF)	Actions
Total MMWD Storage	73,160 AF	--
Alert Stage, April 1	MMWD Storage < 50,000 AF	<ul style="list-style-type: none">• Voluntary 10% use reduction• Optimize SCWA
Mandatory Stage, April 1	MMWD Storage < 40,000 AF	<ul style="list-style-type: none">• Mandatory 25% use reduction• Optimize SCWA
Emergency Stage, December 1	MMWD Storage < 30,000 AF	<ul style="list-style-type: none">• Declare water shortage emergency



August 6, 2019 Rainfall

Monthly Rainfall





Running 12-month Potable Water Production (AF)

