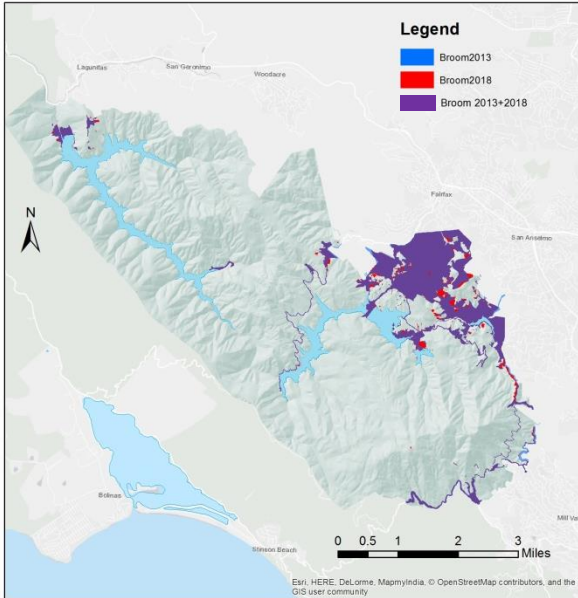
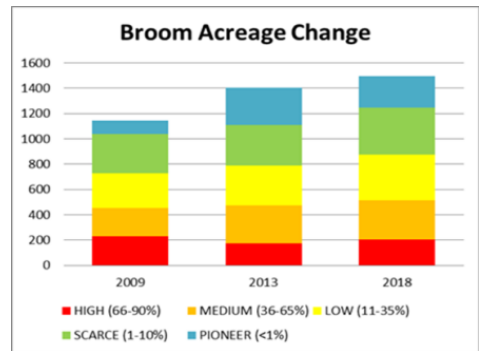


2018 Broom Mapping on Mt. Tamalpais Watershed Lands

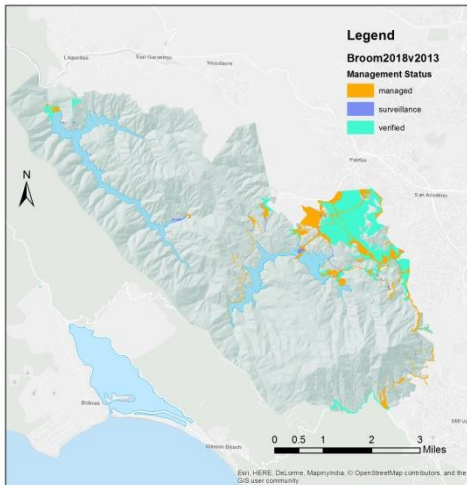


TOTAL BROOM EXTENT

Increased by over 100 acres, or approximately 7%, at a rate of around 20 acres a year, less than half the rate of spread from 2008-2013.



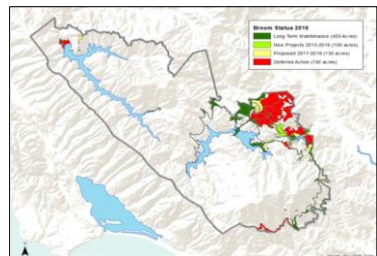
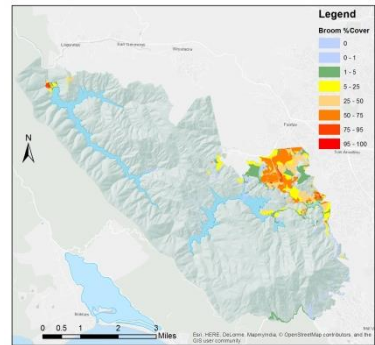
BROOM MANAGEMENT



Management includes pulling, mowing, and checking old populations with 0 plants for new seedlings (surveillance).

500-600 acres managed
~900 acres not managed

~700 acres of unmanaged broom in the “Deferred Action” Zone



MMWD currently spends around \$250,000 each year, and over 7,000 person-hours (including volunteers), on broom control.

ACKNOWLEDGEMENTS: Many thanks to Andrew Fayram, Jacob Martin and Lindsay Cook, former seasonal watershed aides, for their many field hours tromping through broom and uploading records and search area information. Volunteer Academic Intern Marcus Louie also contributed many valuable hours in the field and at the computer.