

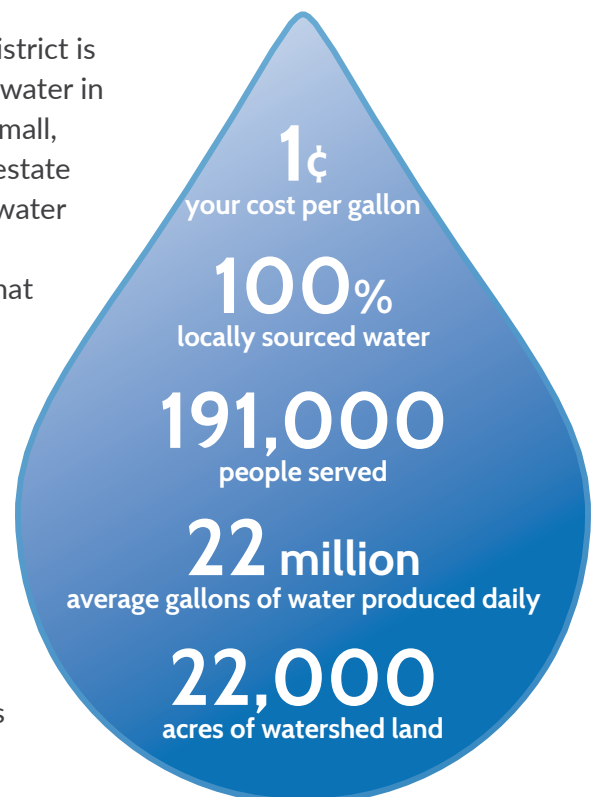


OUR MISSION

To manage our natural resources in a sustainable manner and to provide our customers with reliable, high-quality water at a reasonable price.

Chartered on April 25, 1912, the Marin Municipal Water District is the first municipal water district in California. Prior to that, water in central and southern Marin had been provided by several small, private companies, many of them subsidiaries to local real estate developers. Recognizing the critical importance of reliable water service, the community came together to create a publicly owned and managed water system. Our proud history is what drives our work, and it is at the heart of our mission: to manage our natural resources in a sustainable manner, and to provide you with high-quality water at a reasonable price.

We are proud to provide 100 percent locally sourced drinking water. About 75 percent of our water supply comes from our reservoirs on Mt. Tamalpais and in west Marin, with the remaining supply coming from neighboring Sonoma County's Russian River water system. Our local water supply means you can be sure your water is clean, fresh and sustainably sourced.



YOUR WATER SUPPLY



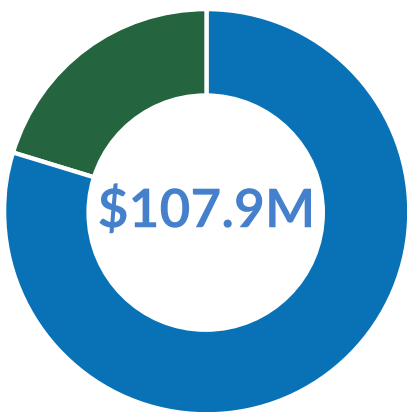
7 RESERVOIRS	3 TREATMENT PLANTS	97 PUMP STATIONS	130 STORAGE TANKS	908 MILES OF PIPELINE
55M gallons MAXIMUM DAILY WATER PRODUCTION			22M gallons AVERAGE DAILY WATER PRODUCTION	

YOUR WATERSHED



22,000 ACRES OF WATERSHED LAND	152 MILES OF ROADS AND TRAILS	1,000 SPECIES OF PLANTS	400 SPECIES OF WILDLIFE	2M VISITORS ANNUALLY
--	---	--------------------------------------	--------------------------------------	-----------------------------------

FY2021 BUDGET







\$86.2M OPERATING
\$21.7M CAPITAL

MORE INFORMATION

Marin Water
220 Nellen Avenue
Corte Madera, CA 94925

415.945.1438
Water@MarinWater.org

FOLLOW US

 MarinWater	 MarinWaterInfo
 Marin.Water	 Marin Water

