



# **Monthly Water Supply Report November 2020**

December 15, 2020

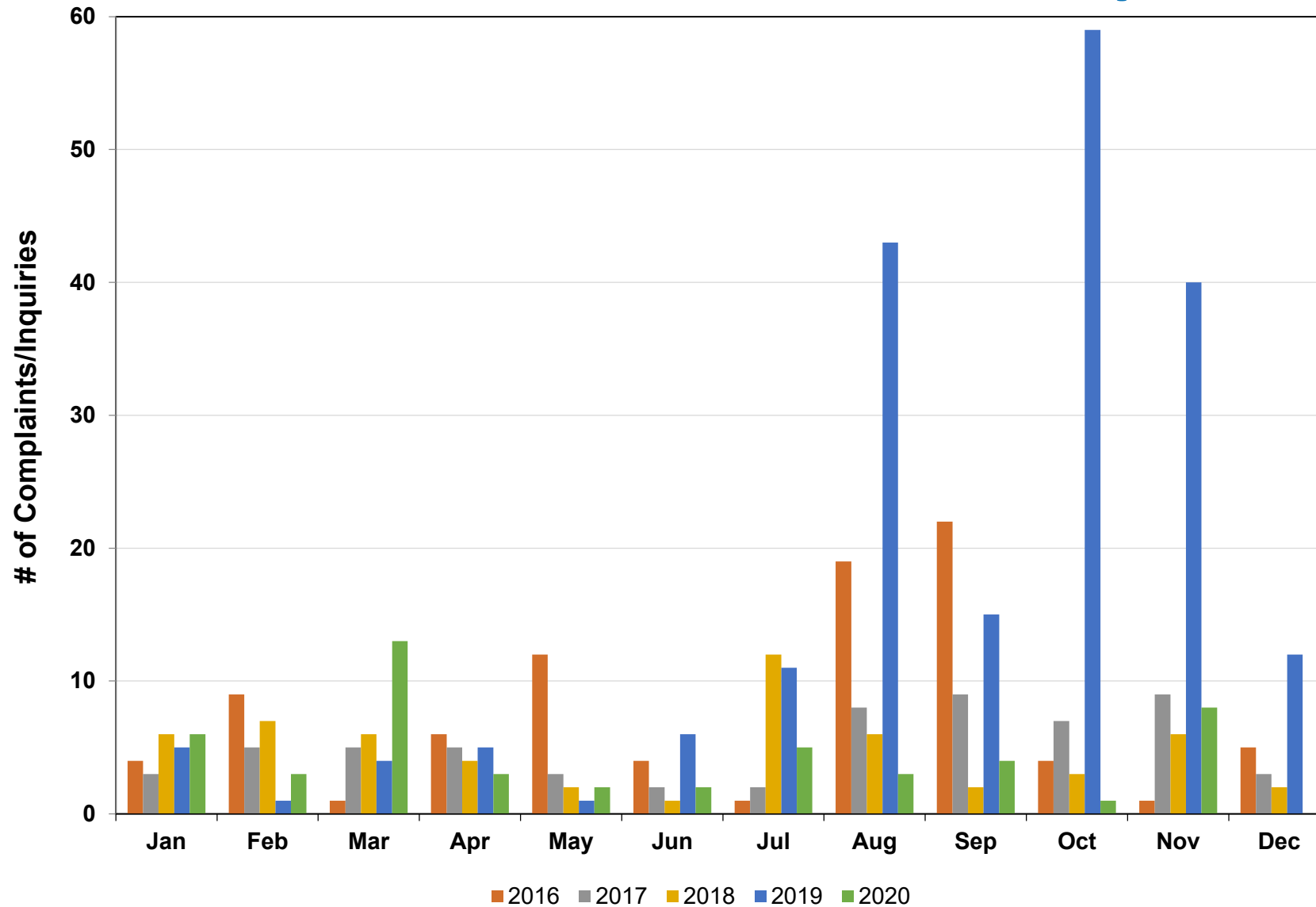


# Overview

- Taste and Odor
- November Water Production and Supply
- Storage Snapshot and Projection
- Water Supply Strategy



# Taste and Odor - Customer Inquiries



# MMWD Reservoir Storage

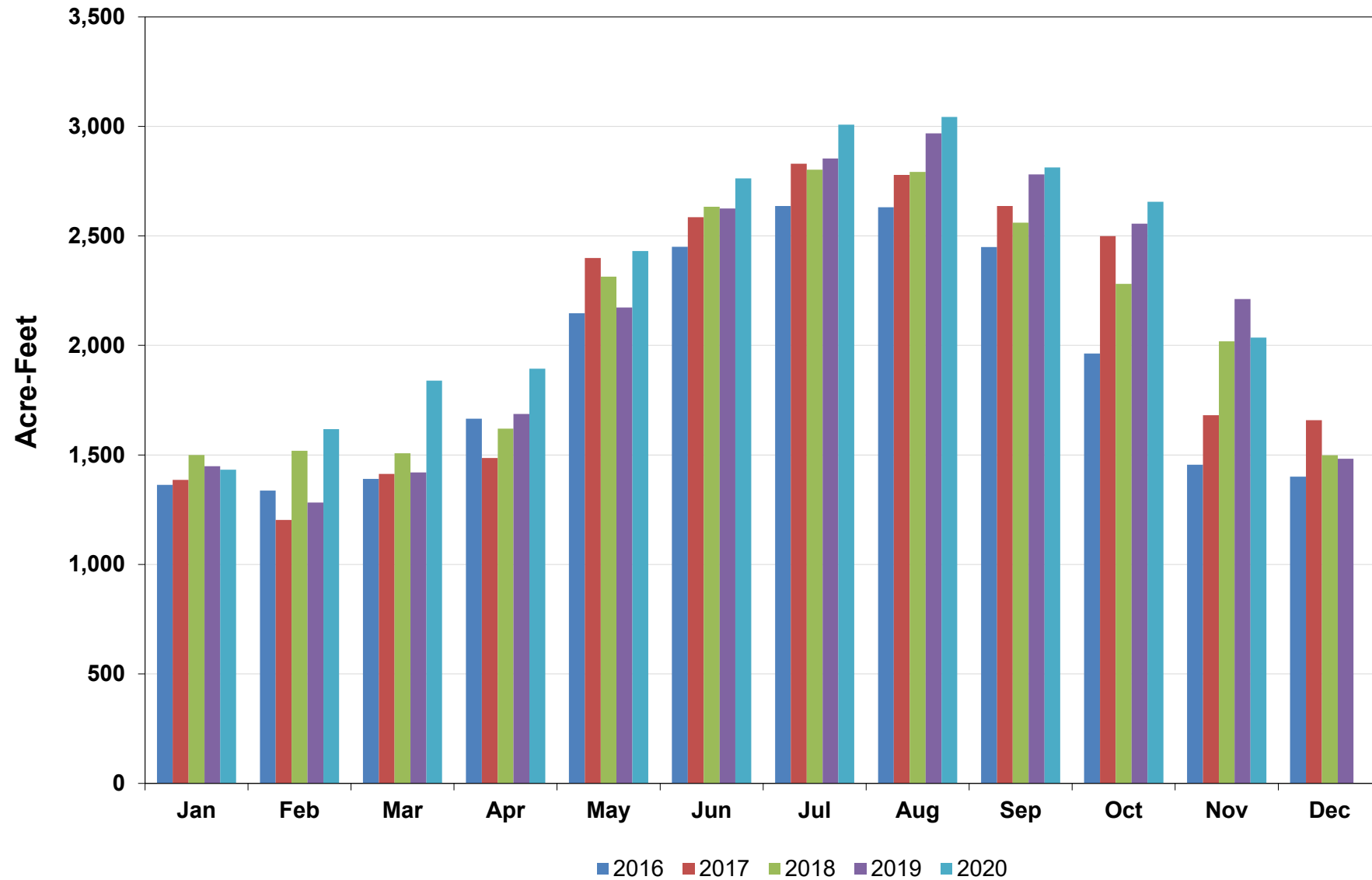
Reservoir	Total Capacity (AF)	Water Level From Spillway (feet down)	Storage (AF)	Percent of Total Capacity
Alpine	8891	20	5,213	58.6%
Bon Tempe	4,017	6.6	3225	80.3%
Kent	32,895	28.7	21,637	65.8%
Nicasio	22,430	18.5	10,390	46.3%
Lagunitas	350	0.5	338	96%
Phoenix	411	3.1	356	87%
Soulajule	10,572	17	6,126	58%
Total	79,566	N/A	<b>47,285</b>	59.4%
Historical Average Storage This Date			52,344	N/A
Historical Percent of Total Storage This Date			65.8	N/A
Percent of Average Storage This Date			90.3%	N/A

# Monthly Water Production

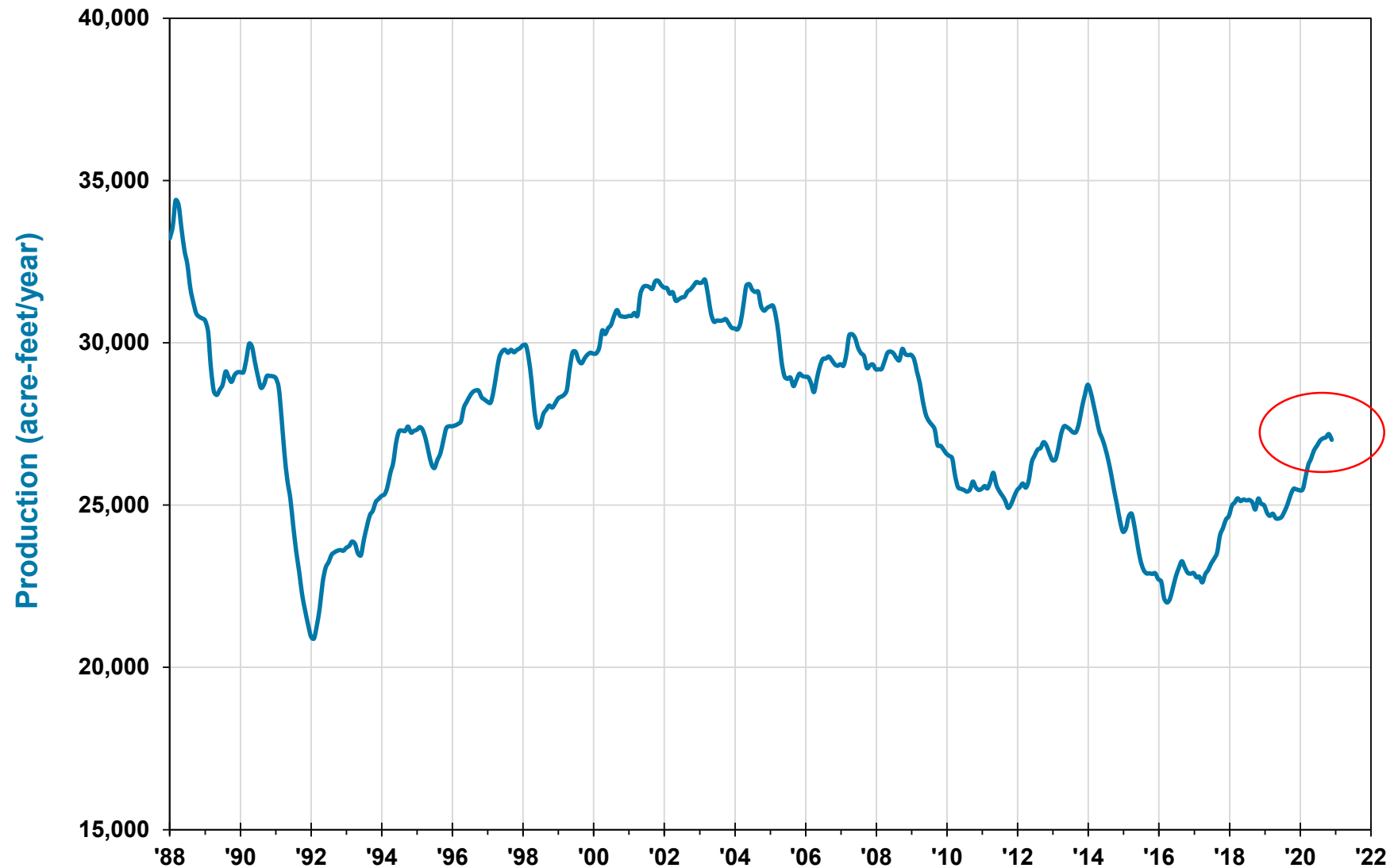
Total Potable Water Production						
Month	FY 2016	FY 2017	FY 2018	FY 2019	FY 2020	FY 2021
Jul	2,287	2,636	2,830	2,802	2,853	3,008
Aug	2,369	2,630	2,778	2,792	2,968	3,043
Sep	2,239	2,449	2,637	2,561	2,781	2,813
Oct	2,148	1,963	2,499	2,281	2,555	2,655
Nov	1,628	1,455	1,681	2,019	2,212	2,035
<b>Total YTD</b>	<b>10,671</b>	<b>11,134</b>	<b>12,425</b>	<b>12,455</b>	<b>13,369</b>	<b>13,555</b>

Imported Water Production						
Month	FY 2016	FY 2017	FY 2018	FY 2019	FY 2020	FY 2021
Jul	364	390	364	374	545	663
Aug	355	378	532	382	543	600
Sep	378	360	543	366	548	505
Oct	380	361	457	371	400	527
Nov	329	341	225	368	202	598
<b>Total YTD</b>	<b>1,806</b>	<b>1,830</b>	<b>2,120</b>	<b>1,861</b>	<b>2,238</b>	<b>2,894</b>

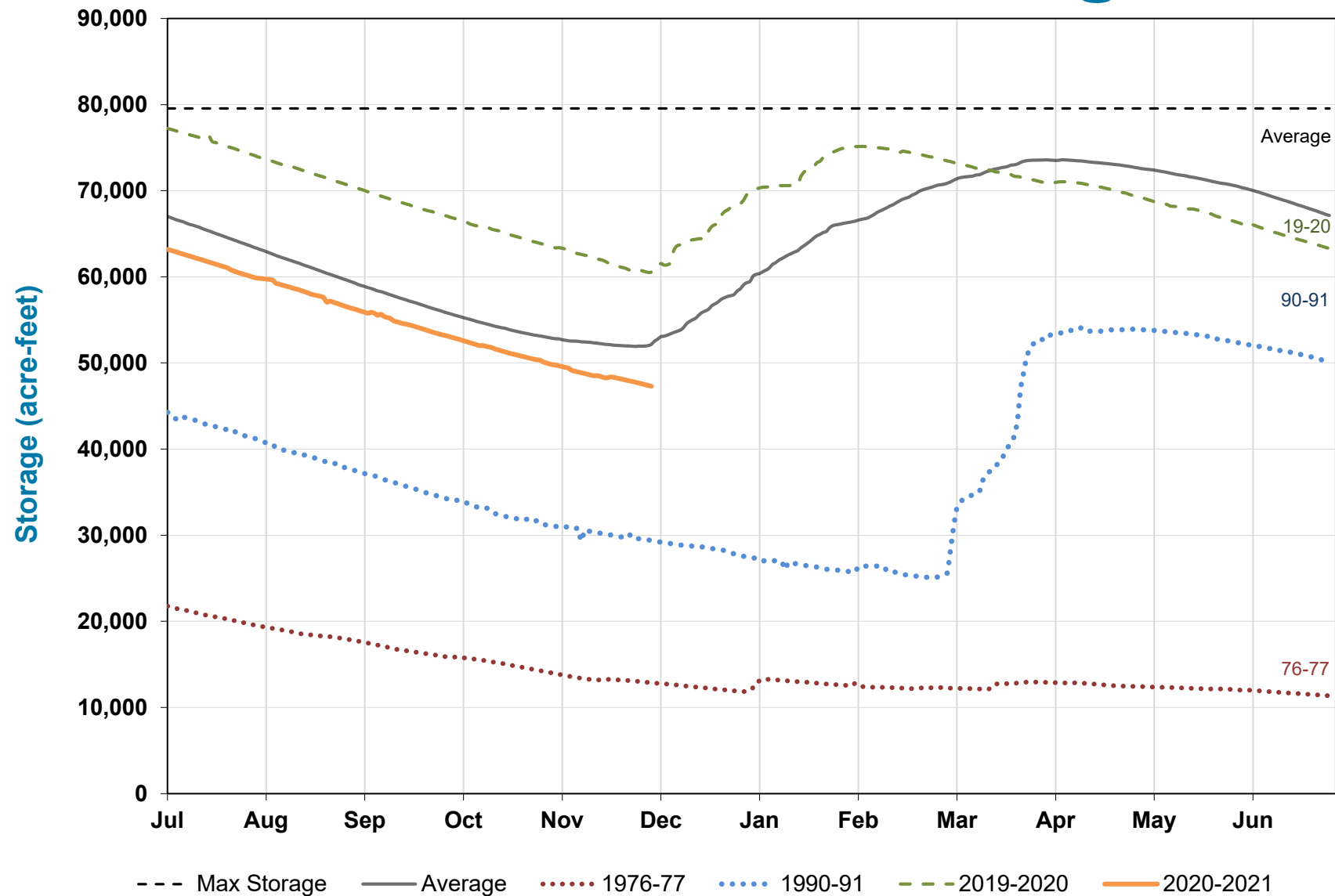
# Monthly Potable Water Production



# Running 12-month Potable Water Production (AF)



# Total Reservoir Storage

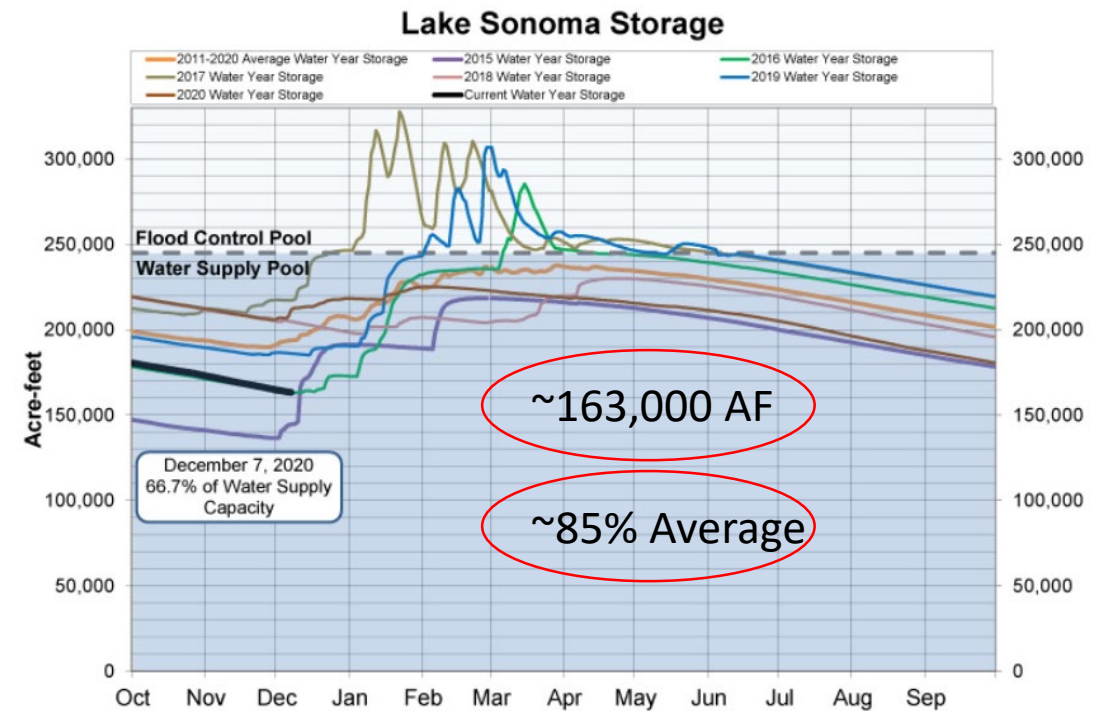




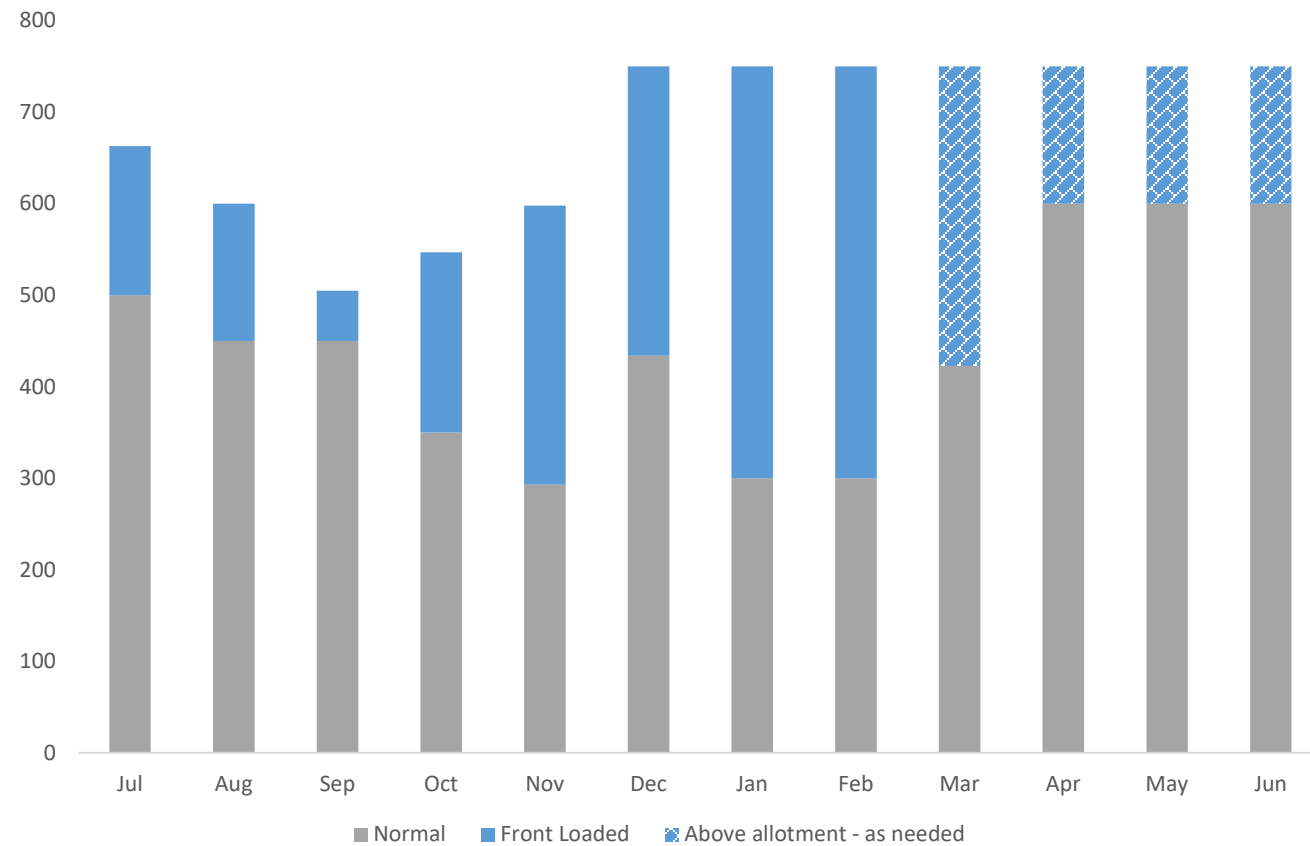
# Storage Snapshot

## Marin Water Storage 12-14-20

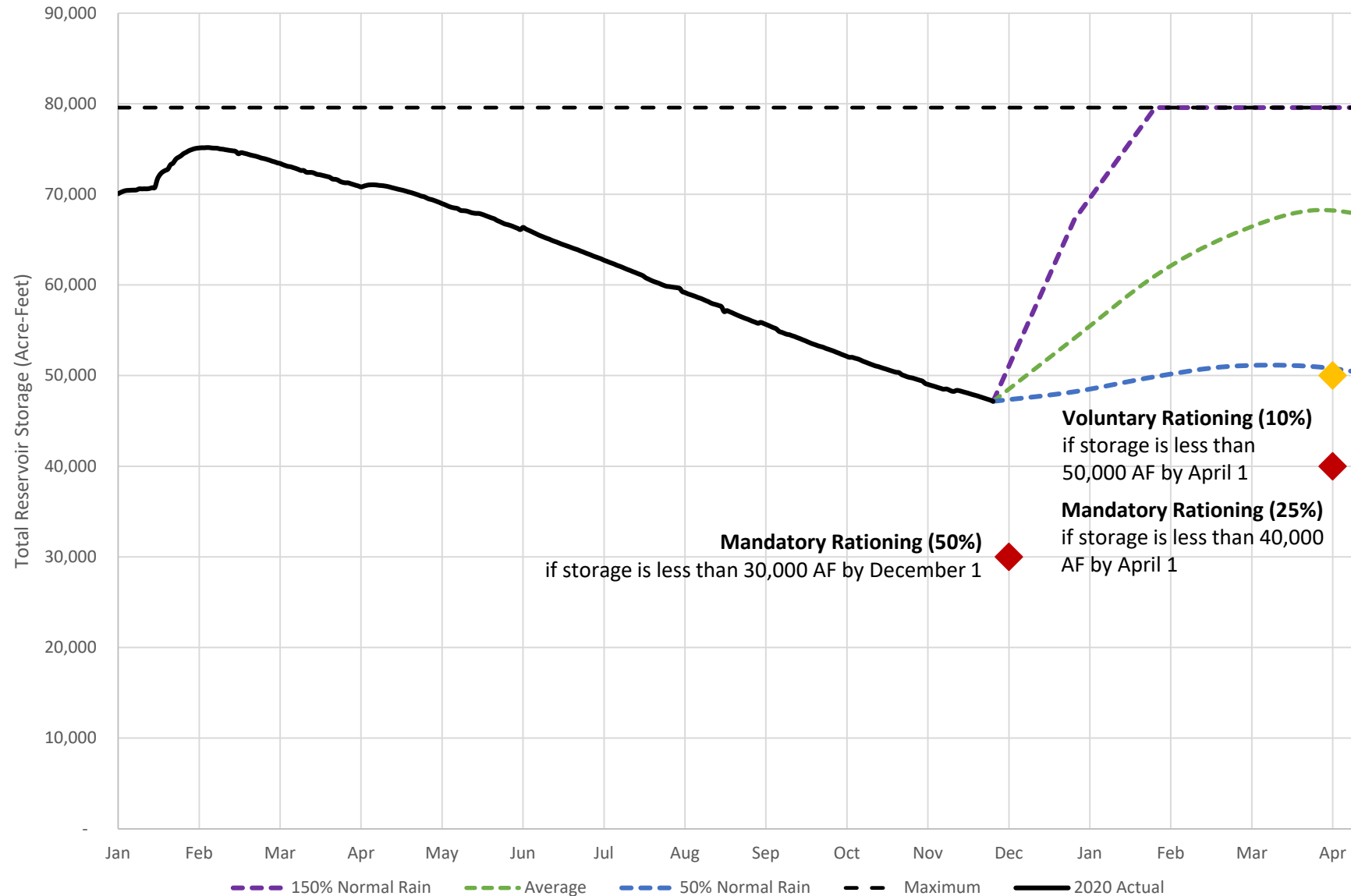
	Current Storage [AF]	Maximum Storage [AF]	Percent of Maximum Storage	Percent of Average Storage
Alpine	5,186	8,891	58.3%	--
Bon Tempe	3,133	4,017	78%	--
Kent	21,068	32,895	64%	--
Lagunitas	347	350	99%	--
Nicasio	10,008	22,430	44.6%	--
Phoenix	359	411	87%	--
Soulajule	6,054	10,572	57.3%	--
Total	46,155	79,566	58%	83%



# Planned FY 21 Water Purchases



# Projected Reservoir Storage - Dec 2020



# SUMMARY

- Water storage
- Front loaded purchases of water
- Demand Management through Water Use Efficiency initiatives
- Continued monitoring of demand and storage
- Preparing for continued dry weather
- Weather Outlook – Rain Wednesday

