



Purchase of Portable Generators

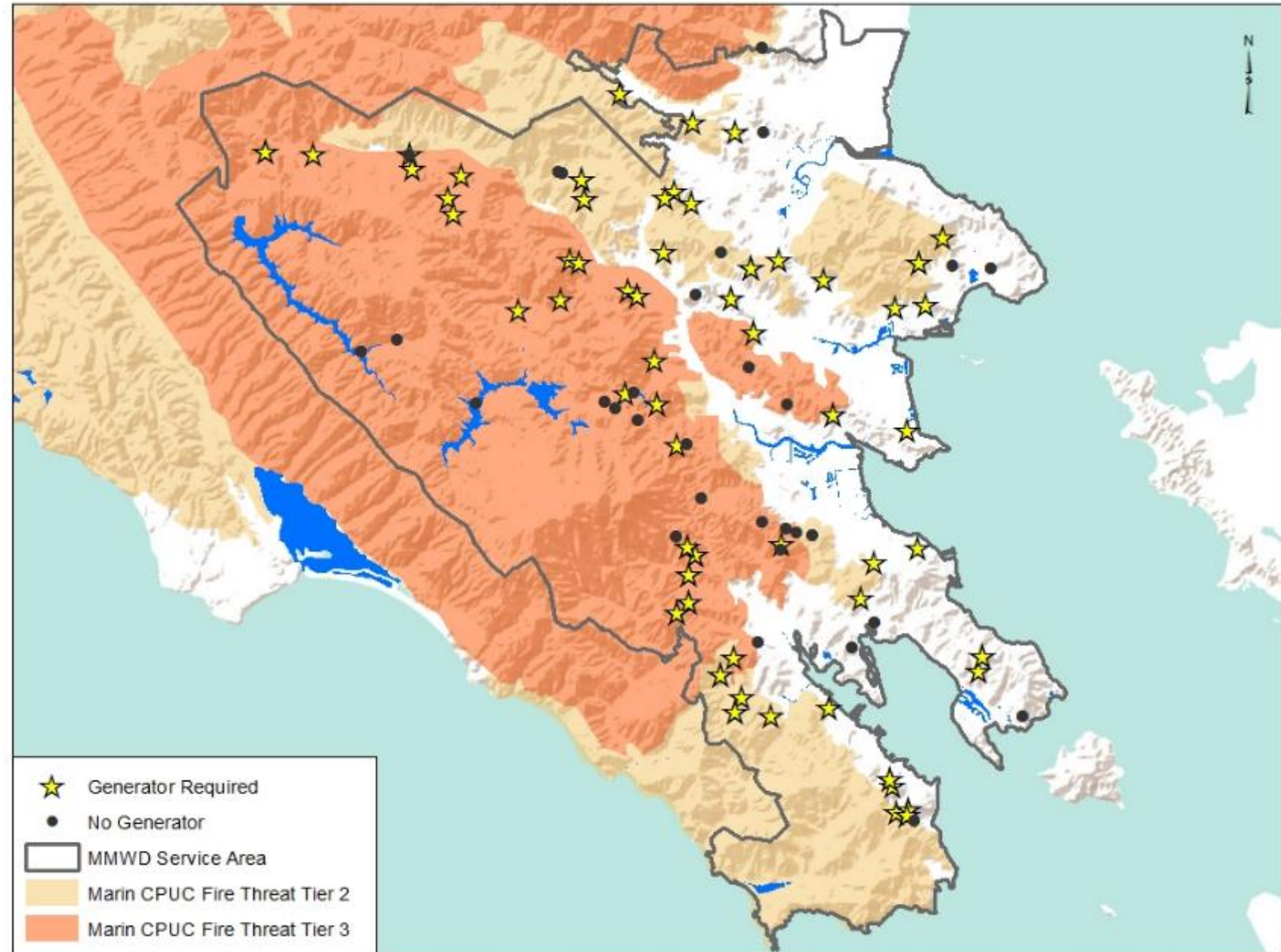
Operations Committee Meeting

January 15, 2021



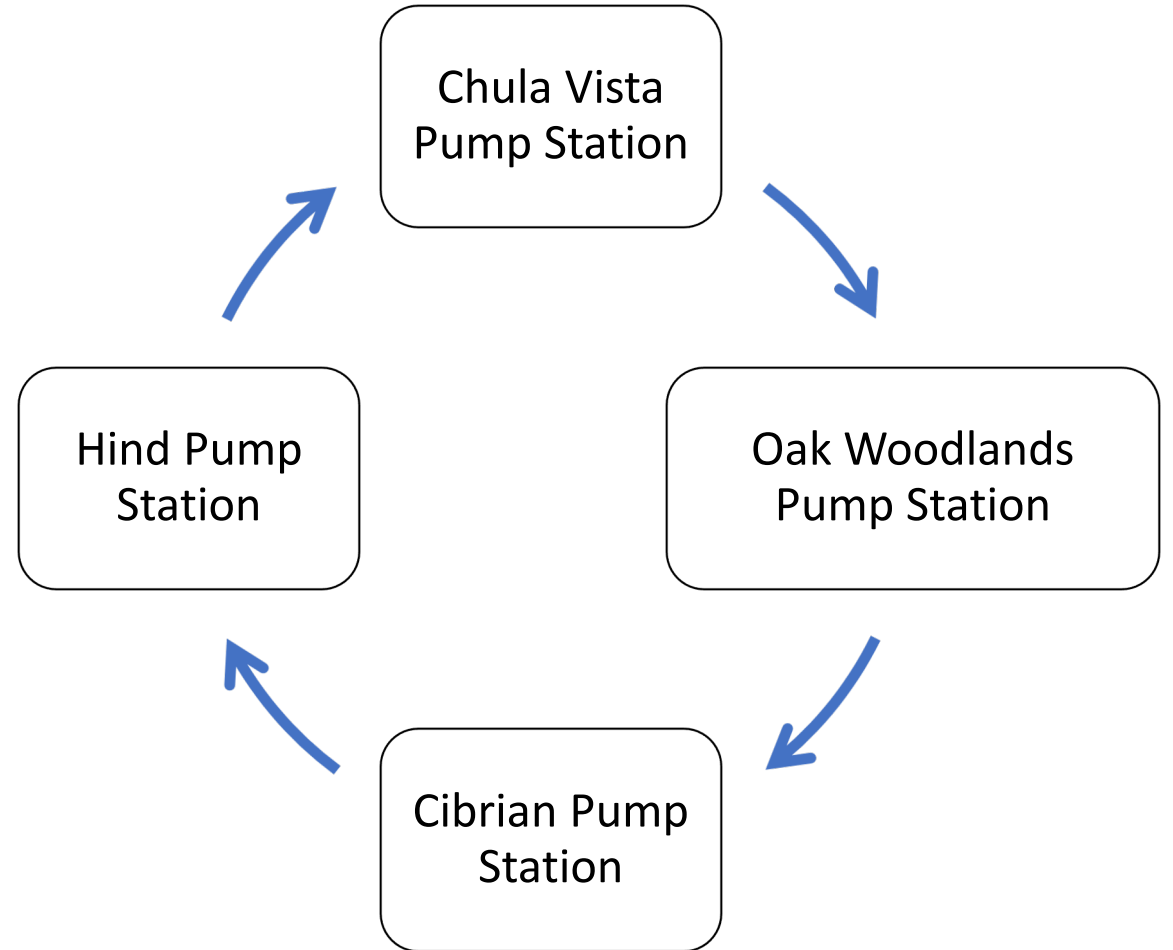
Background

- PG&E Public Safety Power Shutoff (PSPS) program initiated in 2019
- District rented 29 portable generators + SGTP generator for 2020 wildfire season



PSPS Preparation and Response

- Deploy handful of portable generators to critical pump stations
- Shuttle remaining portable generators on pump station routes



Portable Generators

- Towable by District staff
- Remote starters
- Diesel fuel
 - EPA Tier 4 Final Emission Standard (most stringent)
 - High efficiency per gallon
 - Reliable, durable
 - Refueling by District staff



Rental Portable Generator (2020)

Emergency Response

Ownership improves response capability to emergencies:

- Earthquakes
- Wildfires
- Storm Events
- Power outages (beyond PSPS)



Grove Hill Pump Station and Forbes Reservoir
San Rafael

Renting vs. Purchasing Portable Generators

- Cost-effective over equipment lifespan:

| Generator Capacity | Annual Rental Cost per unit | Purchase Price per unit | Simple Break Even [Years] |
|--------------------|-----------------------------|-------------------------|---------------------------|
| 56 kW | \$17,200 | \$53,800 | 3.1 |
| 100 kW | \$25,800 | \$70,700 | 2.7 |
| 200 kW | \$38,300 | \$116,500 | 3.1 |

System Reliability and Resiliency

- **Permanent Generators:**
 - Install at critical pump stations and facilities
- **District-owned Portable Generators:**
 - Maximize flexibility in response and cost-effective
- **Rental Portable Generators:**
 - Supplement District-owned fleet in responding to system-wide power outages

Next Steps

- Purchase 14 Multiquip portable generators for \$946,264 through Sourcewell contract
- Continue to monitor PG&E's progress to minimize outage impacts
- Evaluate need to rent additional portable generators 2021 wildfire season



Mine Ridge Pump Station
Mill Valley