



Watershed Recreation Planning

September 16, 2021



Outline

- Watershed Overview
 - Watershed Plans
 - Watershed Biological Monitoring
- Initial Scoping Phase
- Recreation Planning Process



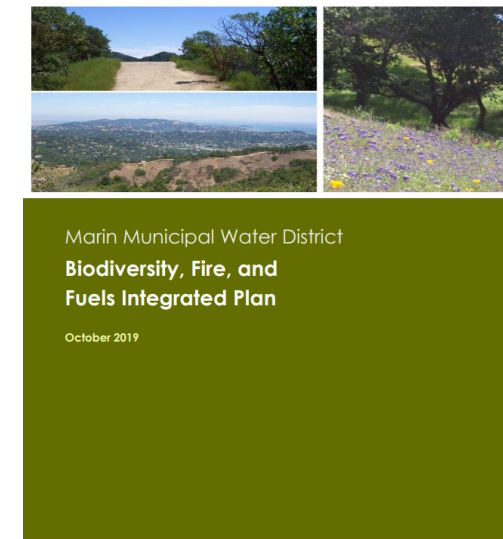
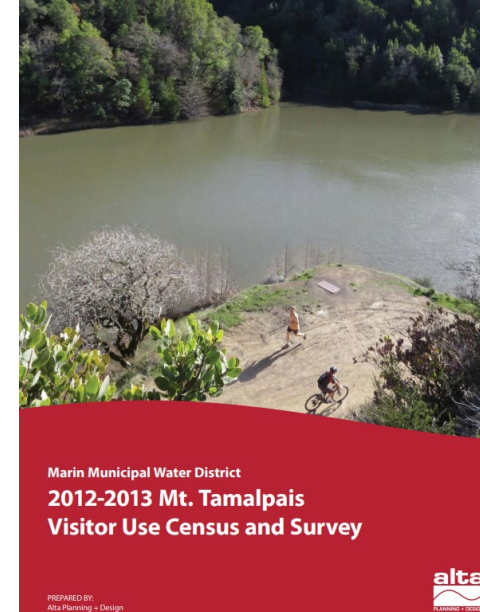
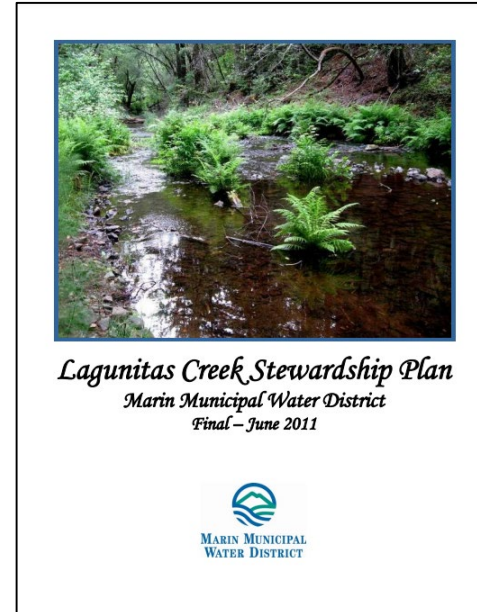
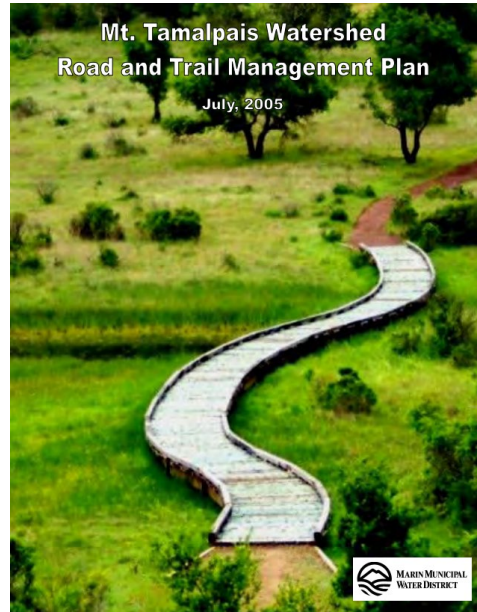
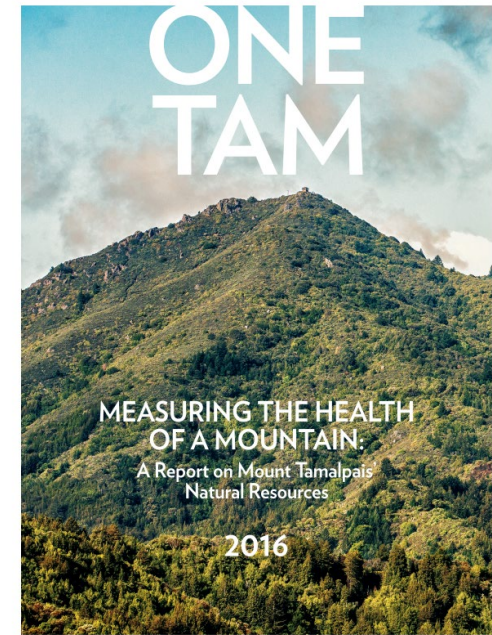
Watershed Overview

- 21,860 acres
- 7 Municipal Reservoirs
- 1.8 Million Visitors Annually
- 92 miles of fire roads
- 59 miles of trails
- 60 miles of non-system trails
- 5 picnic areas
- Natural Resources
 - 400 wildlife species
 - 1000 species of plants



Watershed Plans

- Mt. Tamalpais Roads and Trails Management Plan 2005
- Lagunitas Creek Stewardship Plan 2011
- Watershed Census Survey 2013
- One Tam Peak Health 2016
- Biodiversity, Fires, and Fuels Integrated Plan 2019



PANORAMA
ENVIRONMENTAL, INC.
717 Market Street, Suite 650 San Francisco, CA 94103 415-373-1200 www.panoramawater.com

Biological Monitoring & Inventories

 <p>Foothill Yellow-legged Frog Monitoring at Little Carson Creek and Big Carson Creek, Mt. Tamalpais Watershed 2018-2019</p>	<p>Osprey (<i>Pandion haliaetus</i>): the 2015 Kent Lake Reservoir, Marin Municipal Marin County, California</p> 	 <p>Abundance Patterns Landbirds in the Marin Municipal Water District 1996 to 2019</p> 		<p>Serpentine Endemic Occupancy Project 2018 Field Season</p> 	<p>EARLY DETECTION BEYOND BOUNDARIES</p> 
 <p>Northern Spotted Owl Monitoring on Marin Marin Municipal Water District Lands, 2019</p>  <p>Photo by Audie Gregoire</p> <p>Report to Marin County Parks and Marin Municipal December 30, 2019 Renée L. Cormier</p> <p>Conservation science for a healthy planet 3820 Cypress Drive, #111 Presidio, CA 94954 T 707.761.2555 F 707.765.1465 pointblue.org</p>	<p>Lichen Biodiversity Inventory Marin Municipal Water District</p>  <p>Frog Lichen (Asterella)</p> <p>July 31, 2015</p> <p>Prepared by: Tom Carlberg, Biological Conservation tcarlberg7@yahoo.com Shelly Benson, Biological Conservation Shelly.Benson@yahoo.com</p> <p>Prepared for: Marin Municipal Water District 220 Nellen Avenue Corte Madera, CA 94925</p>	 <p>ADULT SALMONID MONITORING IN THE LAGUNITAS CREEK WATERSHED</p> <p>Eric Ettlinger, Aquatic Ecologist, Marin Municipal Water District</p> <p>In collaboration with the National Park Service, Point Reyes National Seashore, and the Salmon Protection and Watershed Network</p> <p>October 2019</p> 	 <p>Smolt Monitoring in the Lagunitas Creek Watershed</p>  <p>Prepared by: Eric Ettlinger, Aquatic Ecologist Jonathan Koehler, Fisheries Program Manager</p> <p>February, 2021</p>  <p>220 Nellen Avenue, Corte Madera, CA 94925 415.945.1455</p>	 <p>JUVENILE SALMONID MONITORING IN THE LAGUNITAS CREEK WATERSHED - 2019</p> <p>Prepared By: Eric Ettlinger, Aquatic Ecologist Alex Johanson, Watershed Aide Keana Richmond, Watershed Aide Tucker Wasuta, Watershed Aide</p> <p>Marin Municipal Water District 220 Nellen Avenue Corte Madera, CA 94925 (415) 945-1193</p> <p>May 2020</p> 	<p>2022 Forest Pest and Pathogens</p> <p>2022 Seeps and Springs</p> <p>2023 Grasslands Inventory</p> <p>One Tam Peak Health Update</p>

Watershed Recreation Management

Outdoor Recreation Management

is the **proactive and adaptive process** for managing characteristics of visitor use and the natural and managerial setting using a variety of **strategies and tools** to **achieve and maintain desired natural resource conditions and visitor experiences**

Definition from Visitor Use Management Council: <https://visitorusemanagement.nps.gov/>

Constraints & Opportunities Relating to Recreation Planning

- Legacy network of Roads and Trails
- Sensitive physical and biological resources
- Various visitor goals
- Differing expectations among visitors
- Long-standing conversations around different uses
- Limited financial and staff resources
- Disruptive advancements (app-based trail guides, new modes, social media, etc.)
- Climate change, drought, and wildfire

Visitor Use Management Framework

- **Begin to Build the Foundation (Why):** What is the purpose and/or need? What issues are we facing? What issues can this plan address? What data and information do we have? What do we need? What won't this plan be able to address?
 - **Begin to Define Visitor Use Management Direction (What):** What are our desired conditions?
-
- **Identify Management Strategies (How):** What strategies can we use to achieve our desired conditions?
 - **Implement, Monitor, Evaluate, and Adjust (Do):** Implement management actions and adjust them based on monitoring data.

Initial Scoping

Initial Public Scoping Phase

- Partnered with GGNPC to facilitate two public scoping meetings
- Outreached to 57 community groups to encourage participation
- Had 227 community members participate in the two public meetings
 - May 21st guest speakers presented on foundational concepts
 - June 25th facilitated breakout sessions to solicit community input
- Developed Summery Memo to capture community input and process

Brief History of Mt. Tamalpais Watershed

Dewey Livingston

Anne T. Kent California Room


- History of human use of Mt. Tam
- Formation of the MMWD
- Changes overtime in patterns of use
- National recreation movements
- Evolution of bicycles

Balancing Natural Resources Protection & Recreation

Dr. Ashley D'Antonio

Assistant Professor of Nature-based Recreation Management

- What is recreation planning?
- What is a recreation plan?
- Balancing natural resource protection & recreation use
- Example recreation plan components
- Opportunities & limitations in recreation planning



Driven by identified
**desired conditions and
management outcomes**

Bounded by **laws,
missions, & policies**

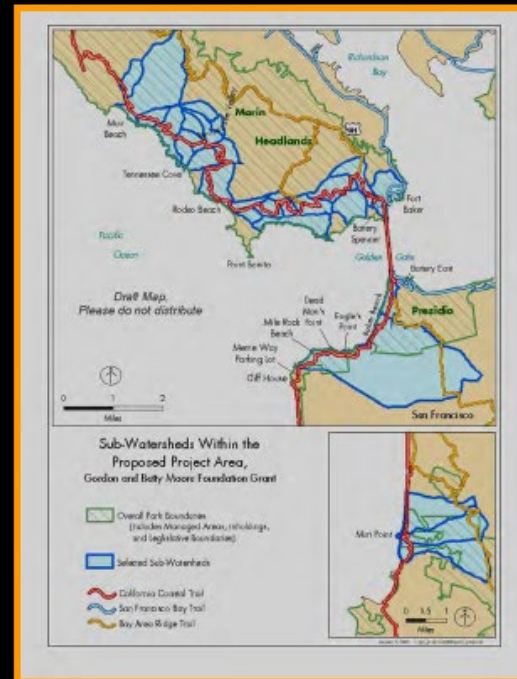
**No universal planning
process or framework**

Trails For Ever-A Case Study

Kate Bickert
Golden Gate National Parks Conservancy

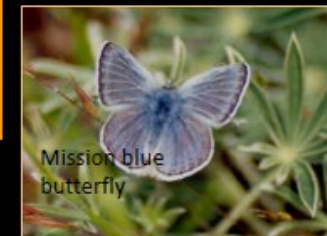
- Access
- Restoration
- Stewardship
- Support
- Public Engagement

COASTAL TRAIL CORRIDOR



PROJECT STUDY AREA -

- Approximately 17 miles of Coastal Trail
- Approximately 5,000 acres
- Muir Beach – Mori Point
- Habitat for more than 20 threatened and endangered species
- Significant Cultural Resources



Diversity, Equity and Inclusion in the Outdoors

Jose Gonzales

Avarna Consulting Group

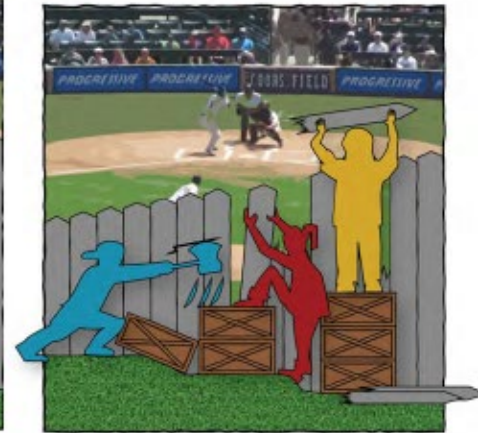
- Philosophical Foundations
- Legal Foundations
- Socio-Cultural Foundations



EQUALITY



EQUITY



JUSTICE

Meeting 2-Community Input

Break Out Session 1

Why do you think a recreation management plan is needed?

- What do you want to see as part of this recreation and stewardship planning process
- What issues can be addressed
- What additional information do we need to inform the process

Break Out Session 2

What are foundational elements of desired conditions?

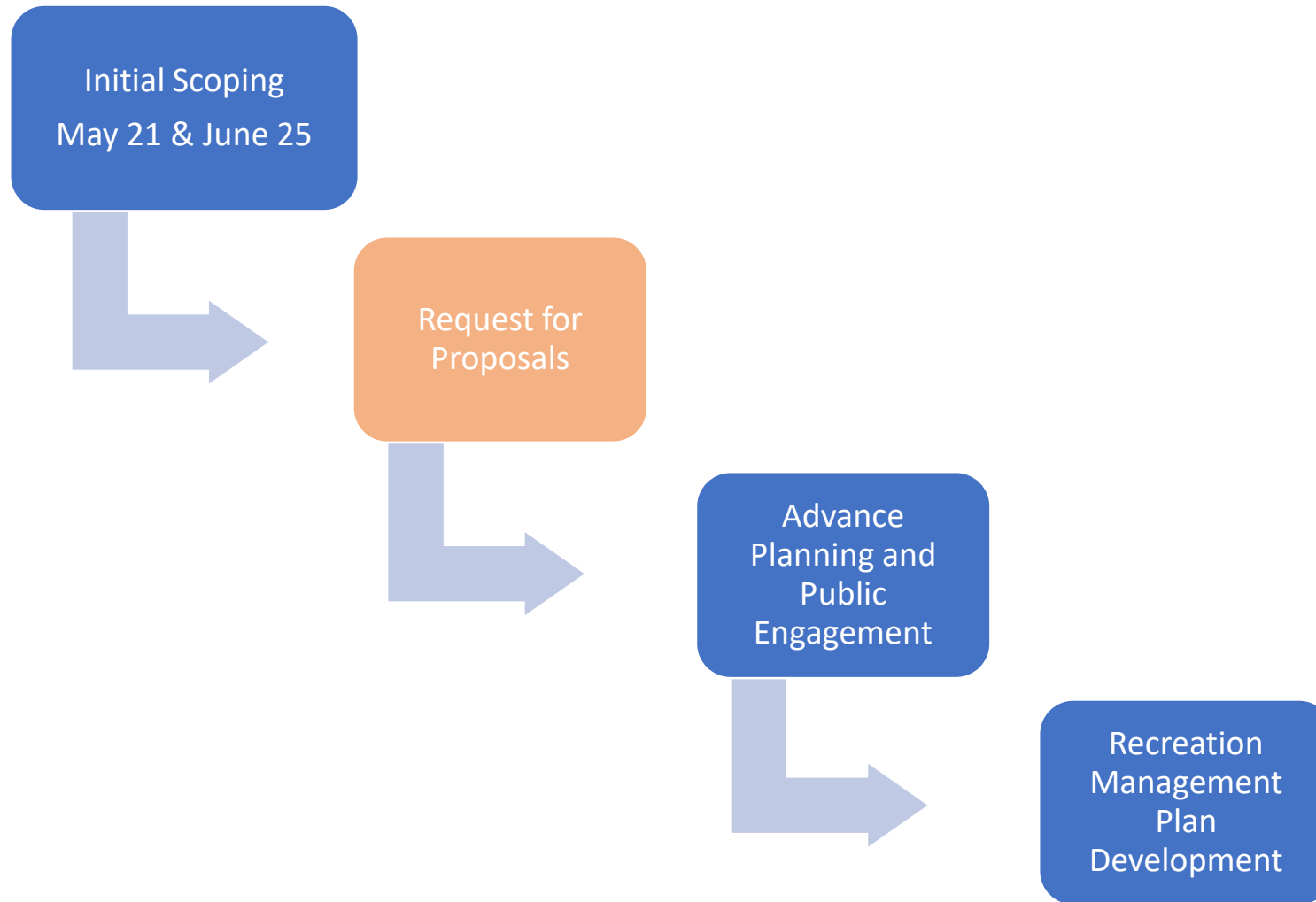
- What values are central to future conditions
- How do we align around a set of desired conditions

Overarching Themes

- Data driven decision making
- Ongoing public engagement through the planning process
- Inclusivity:
 - Equitable access
 - Diverse use groups
- Balance conservation with recreation
- Visitor management to spread users out and separate types of use
- Stewardship as foundation of plan

Planning Process & Request for Proposals

Planning Process



Request for Proposals

- Project Management
- Literature Review
- Watershed Recreation Management Plan
 - Community Engagement
 - Visitor Information
 - Partnership and Outreach
 - Visitor Management Strategies
 - Recreation Facilities Assessment
 - Management Action & Operations
 - Adaptive Management

Preliminary Schedule

TASK: DELIVERABLE(s)	ESTIMATED COMPLETION DATE
Notice to Proceed	January/February 2022
Project Management and Administration	Quarterly; December 21, 2023
Literature Review Memo	March 31, 2022
Final Recreation Management Plan	June 30, 2023
Environmental Review Memo	January 1, 2023

Next Steps

- Solicit Proposals from Consultants November 19th
- Consultant Interviews in December
- Notice to Proceed in January/February
- Develop public engagement plan
- Project Kick-Off