



# Drought Webinar

October 21 | 5 - 7 p.m.

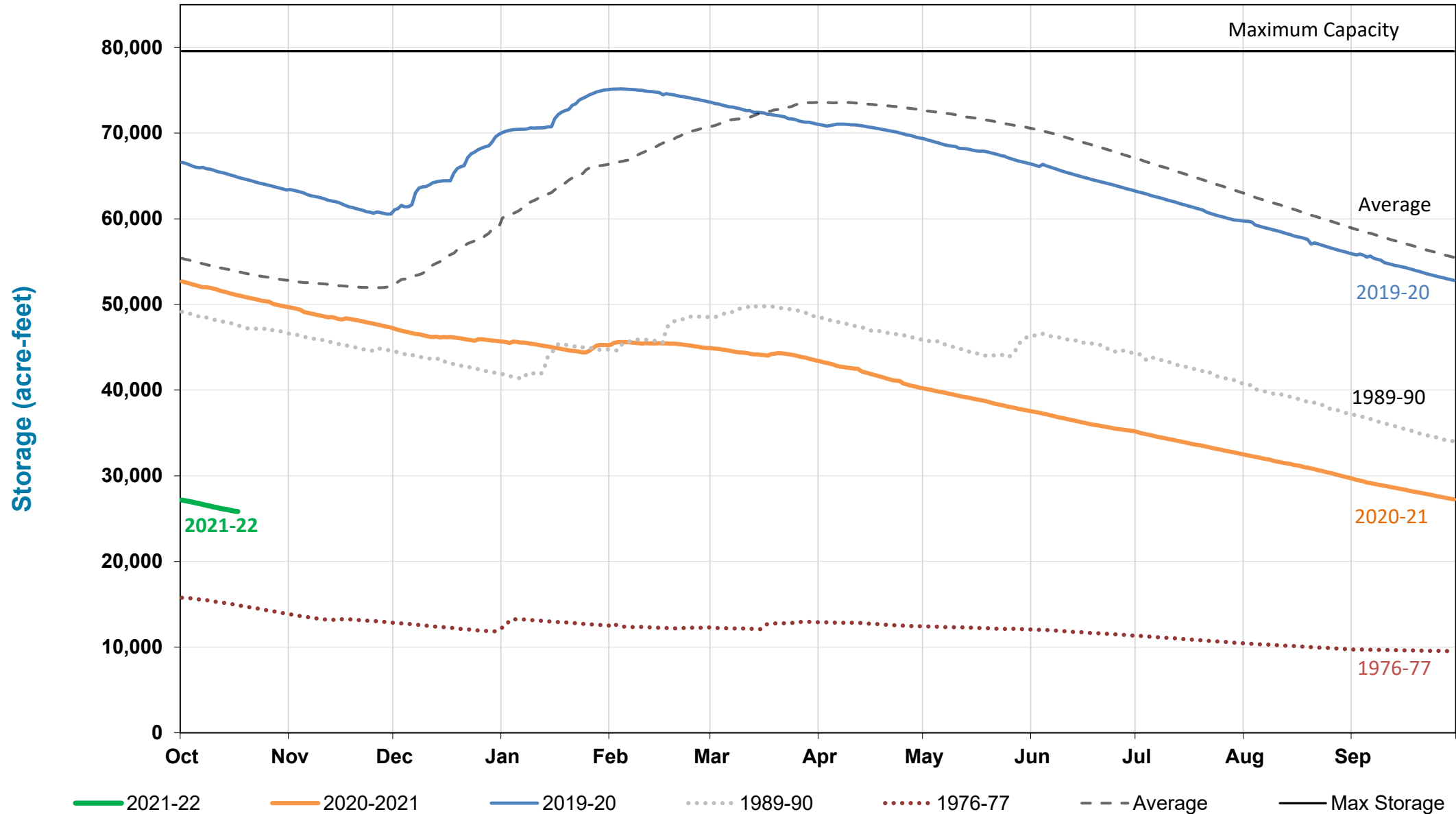


MARIN WATER

# Overview

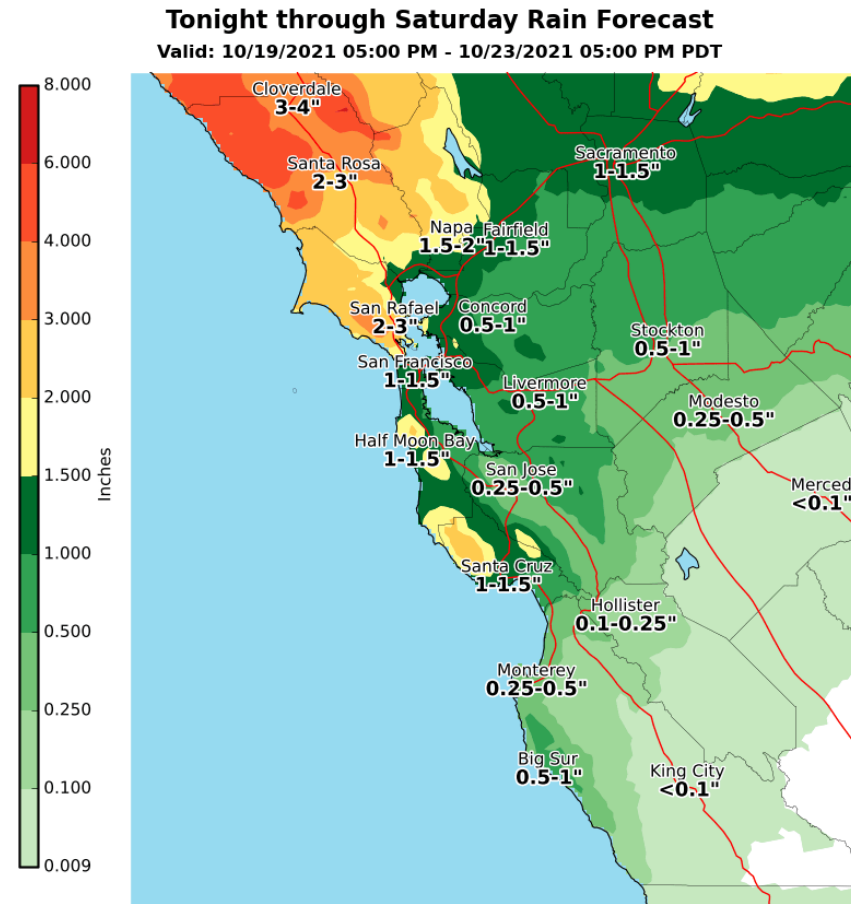
- Current Water Supply (*Lucy Croy, Water Quality Manager*)
- Supplemental Water Supply (*Paul Sellier, Operations Director*)
- Q&A Open Time

# Total Reservoir Storage



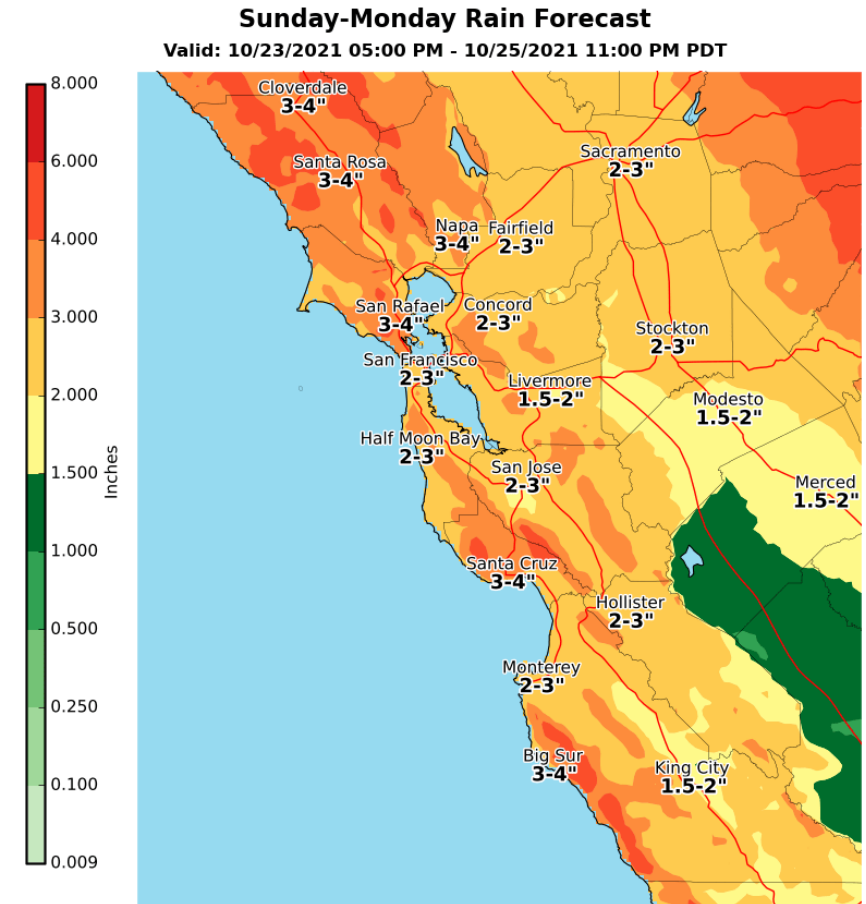


# Current Rain Forecast



National Weather Service  
San Francisco Bay Area  
10/19/2021 02:49 PM PDT

Follow Us: [f](#) [t](#) [v](#)  
weather.gov/sanfrancisco

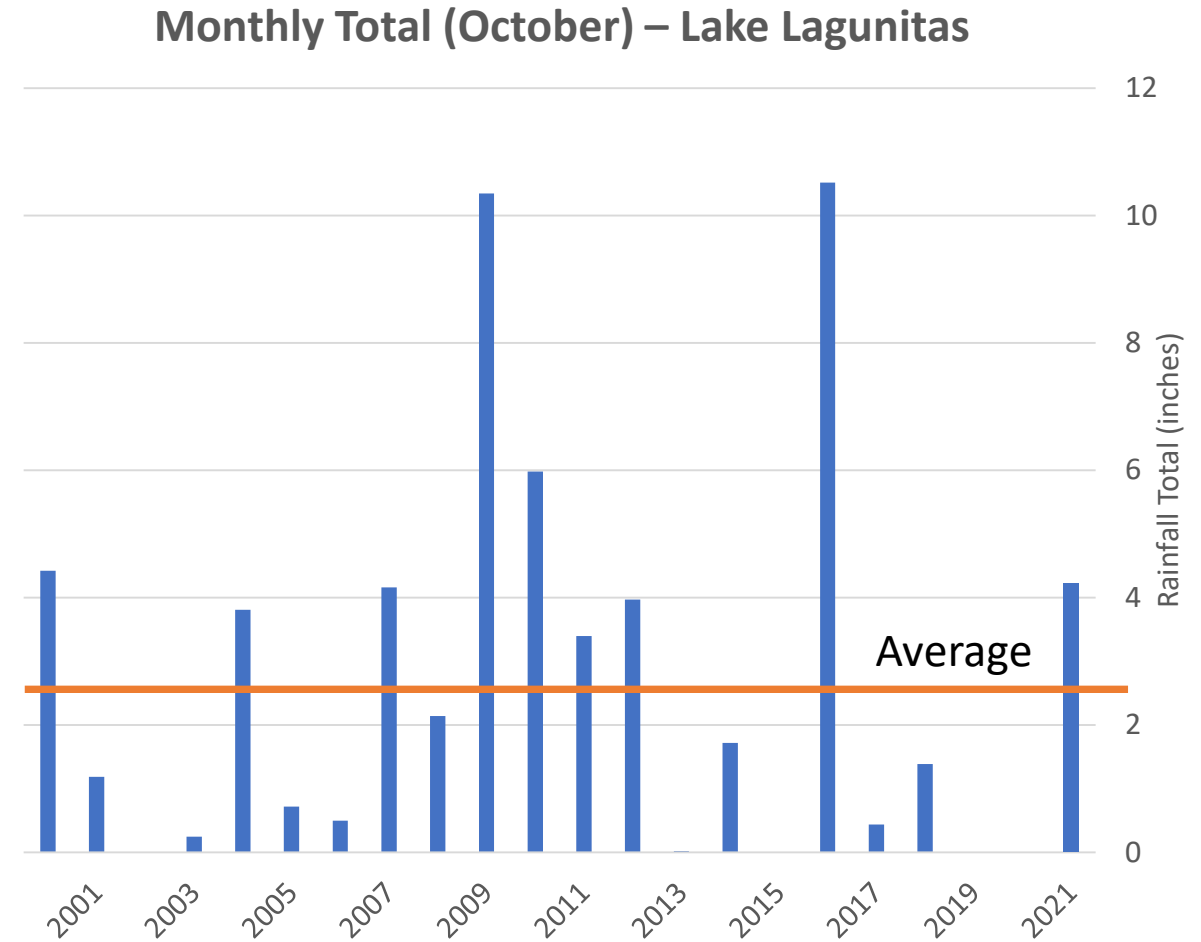


National Weather Service  
San Francisco Bay Area  
10/19/2021 02:53 PM PDT

Follow Us: [f](#) [t](#) [v](#)  
weather.gov/sanfrancisco

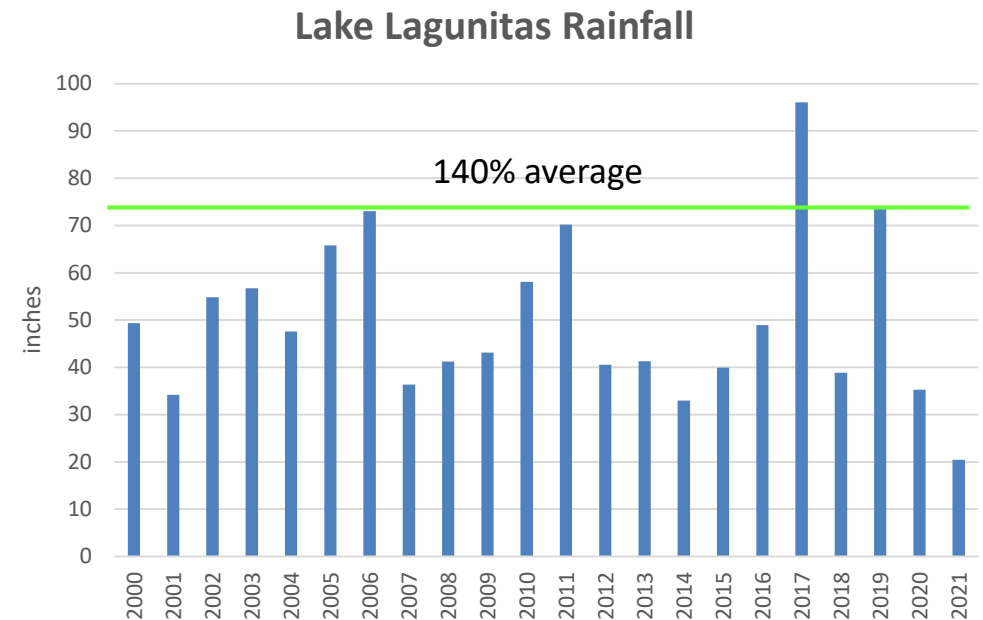
# October Rainfall

- Average
  - All records (143 year): 2.7 in
  - Last 20 years: 2.6 in
- So far
  - Received 4 inches this month

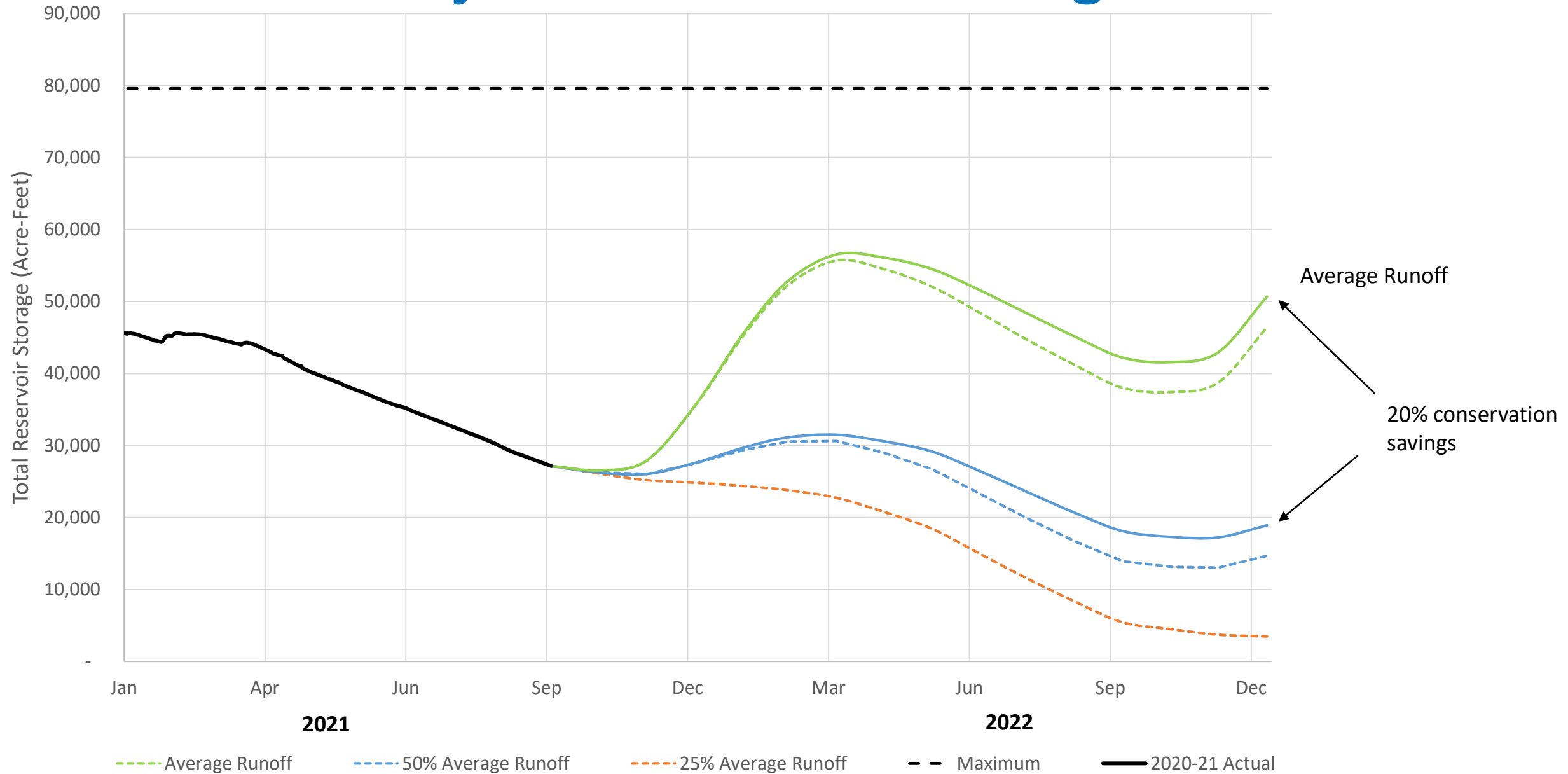


# Catching up to Average Runoff

- DWR: 140% of average rainfall needed to produce average runoff (USGS Basin Characterization Model)
- Average → 140% Rainfall:
  - October: 2.6 inches → 3.6 inches
  - Water Year: 52 inches → 73 inches
- Received over 73 inches in last 20 years:
  - 2019, 2017, 2006



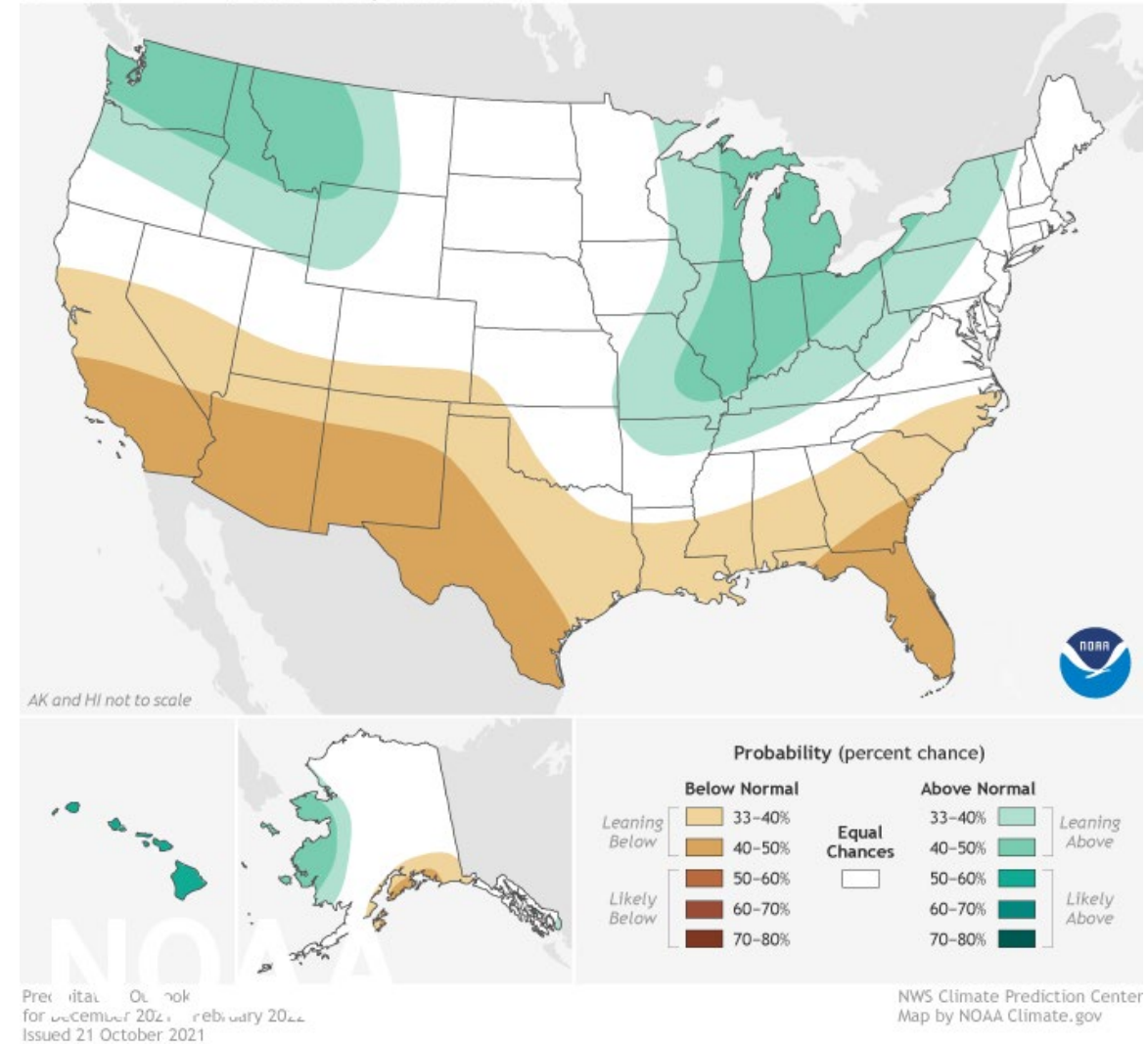
# Projected Reservoir Storage



# Upcoming Months

- Forecast 87% chance of La Niña in December – February 2022
- Southern California/NV – usually reliably dry conditions
- Northern California equal chances of wet/dry winter

Winter 2021: U.S. Precipitation Outlook





# Actual vs. Targeted Water Use

