

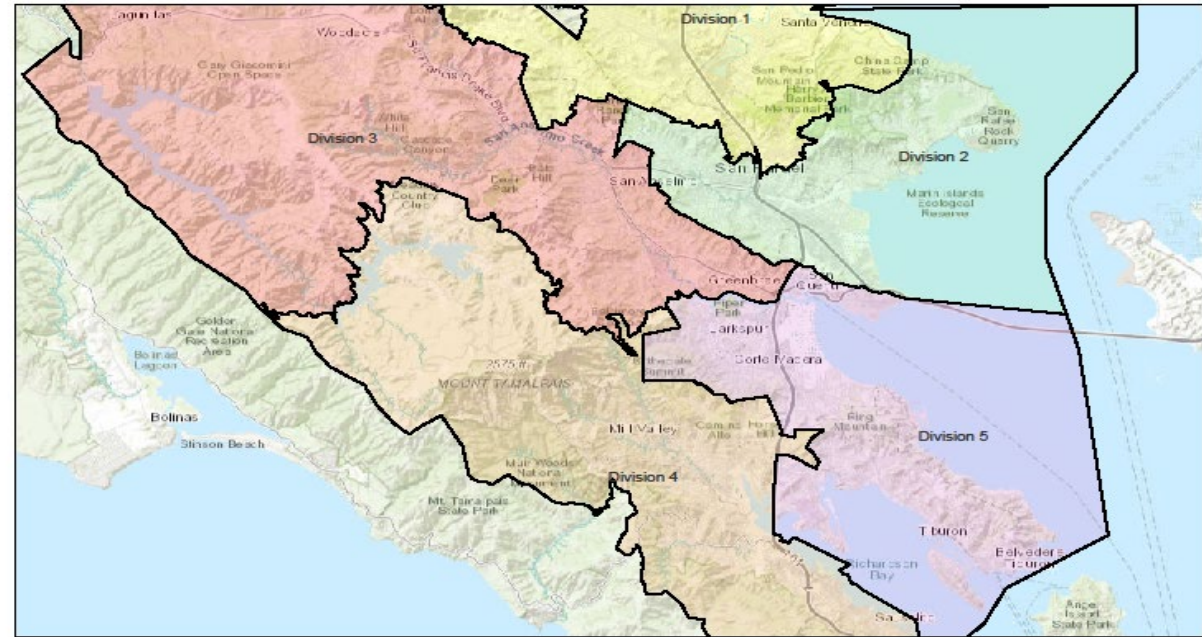


**MARIN  
WATER**

# 2020 Census Data & Redistricting

January 27, 2022

Marin Water Board Divisions



August 18, 2021

County of Marin, Bureau of Land Management, Esri, HERE, Garmin, USGS

Current division boundaries map:  
[www.marinwater.org/board-of-directors](http://www.marinwater.org/board-of-directors)

# Recap of Legal Framework for Redistricting

- **Water Code section 71540**

Board shall, by resolution, adjust the boundaries of the any divisions pursuant to Sections 22000 et seq. of the Elections Code.

- **Elections Code section 22000**

Requires the District to adjust the boundaries of any divisions, after the Census, so that the divisions are as far as practicable, equal in population and in compliance with Section 10301 of Title 52 of the United States Code.

# Recap of Statutory Factors for Consideration

In addition to ensuring near equal population in each division and compliance with voting rights laws, the Board may give consideration to the following factors:

- (1) topography
- (2) geography
- (3) cohesiveness, contiguity, integrity, and compactness of territory
- (4) community of interests of the division

(Elections Code section 22000)

# Events Since Prior Presentation

- Final adjusted 2020 census data was received and analyzed by District staff
- The legislature passed Senate Bill 594, which requires the District to now adopt its final adjusted division map by no later than April 17, 2022. (Previous deadline for adoption was May 11, 2022.)

# 2020 Census Data Trends

- Total population increased by 8,211 within the District
- Total population of the District is now 192,961 (up from 184,750 from 2010 Census)
- Average number per division increased from 36,950 to 38,592.

# 2020 Census- Total Population by District\*

\* Without any changes

<b>Division</b>	<b>2010 Population</b>	<b>2020 Population</b>	<b>Population Gain</b>
<b>1</b> (Director Gibson)	36875	38558	1,683
<b>2</b> (Director Schmitt)	36953	39005	2,052
<b>3</b> (Director Bragman)	37105	38701	1,596
<b>4</b> (Director Koehler)	36688	38471	1,783
<b>5</b> (Director Russell)	37129	38226	1,097

# Census Related Adjustments

- Adjustments based solely on population not required
- Minor adjustments will be needed to ensure alignment with new census block boundaries

# Non-Census Related Division Boundary Adjustments

- Include parcels annexed into the District's service area
- Realign District division boundaries with LAFCo service area
- Realign division boundaries with town/city boundaries to the extent possible



# Next Steps- Proposed Schedule

- **First Public Hearing- February 1, 2022**
  - Further discussion of proposed changes and presentation of proposed new division maps
- **Finance & Administration Committee (as needed)- February 24, 2022**
  - Address any Board and public comments received
- **Second Public Hearing- March 1, 2022**
  - Proposed adoption of new division boundaries

# Public Participation/ Outreach

- Launch of redistricting website- [www.marinwater.org/redistricting](http://www.marinwater.org/redistricting)
- Notice of Public Hearings published in Marin IJ
- Meetings agendaized in accordance with Brown Act
- Reach out to stakeholder groups who have expressed interest in process

# Questions?