



Water Supply Update

Board of Directors

August 16, 2022

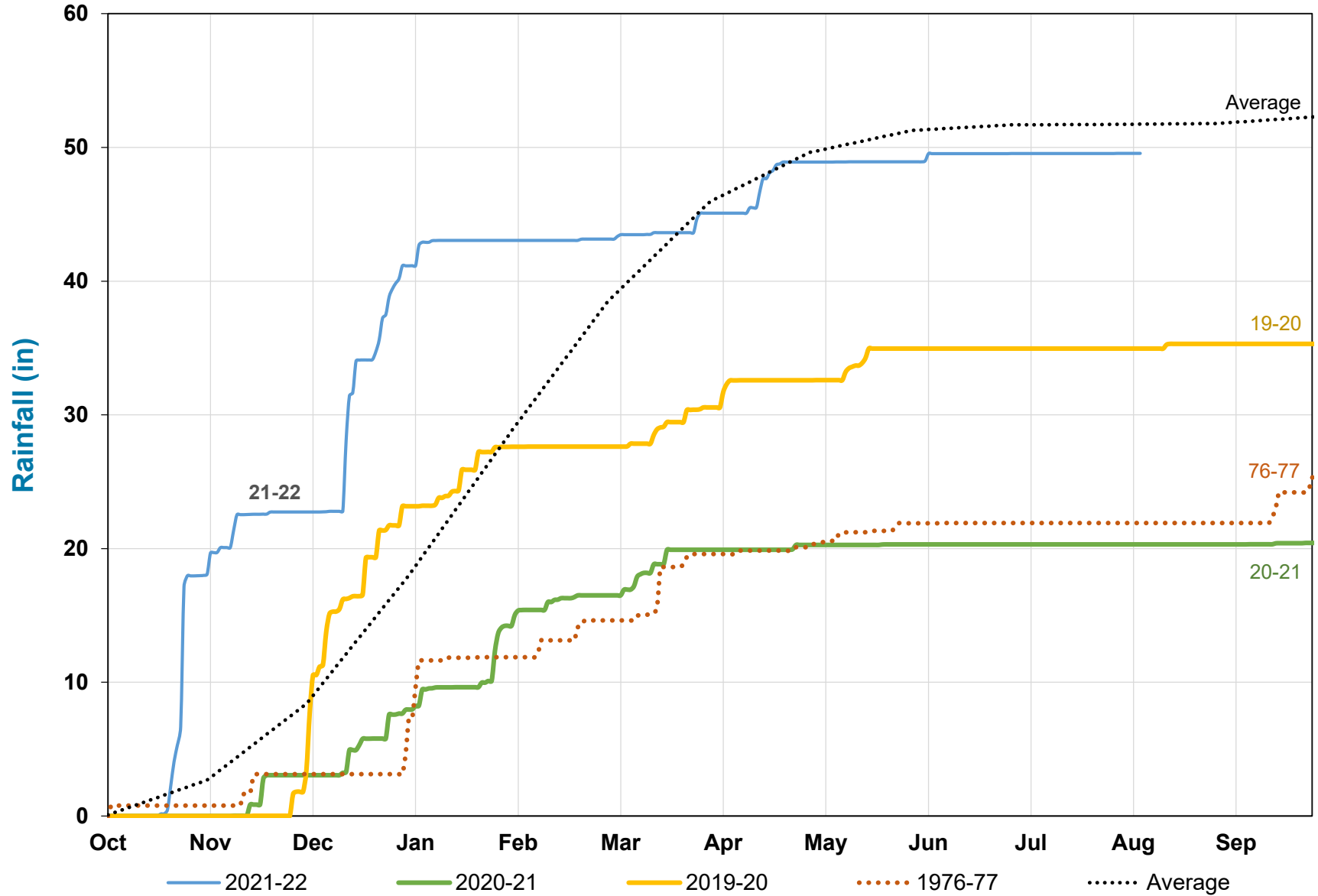


Water Supply Update: Overview

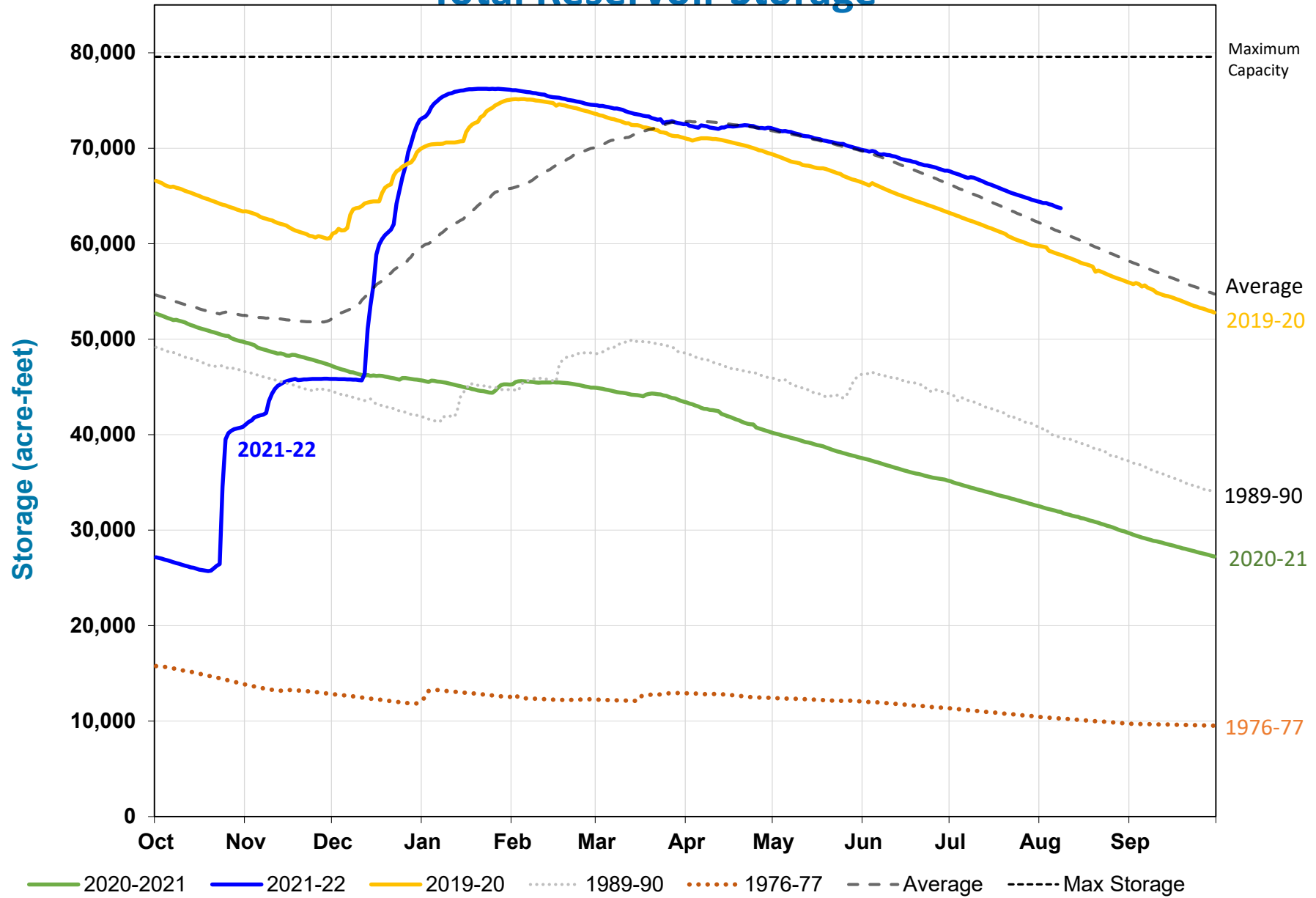
- Current Water Supply
- Water Supply Projection
- NOAA's Climate Forecast
- Summary

Cumulative Precipitation

Lake Lagunitas Rain Gauge



Total Reservoir Storage

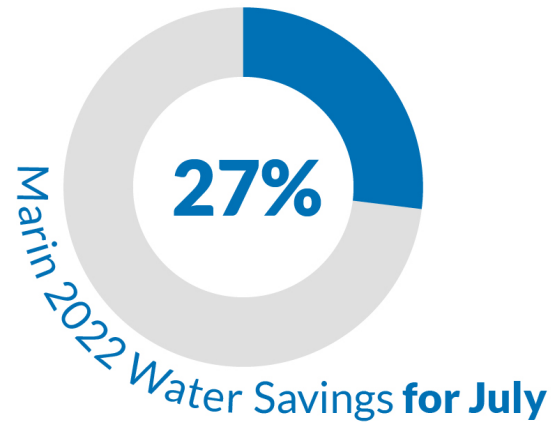


Water Supply Update: Water Use Savings



Monthly Savings Tracker

Percent of water saved compared to the same period in 2020



Average Daily Water Use

(in millions of gallons)

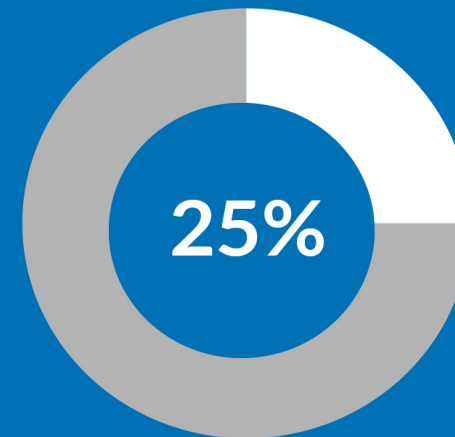
Average Daily Use
July 2022
24.0

Average Daily Use
July 2020
32.7



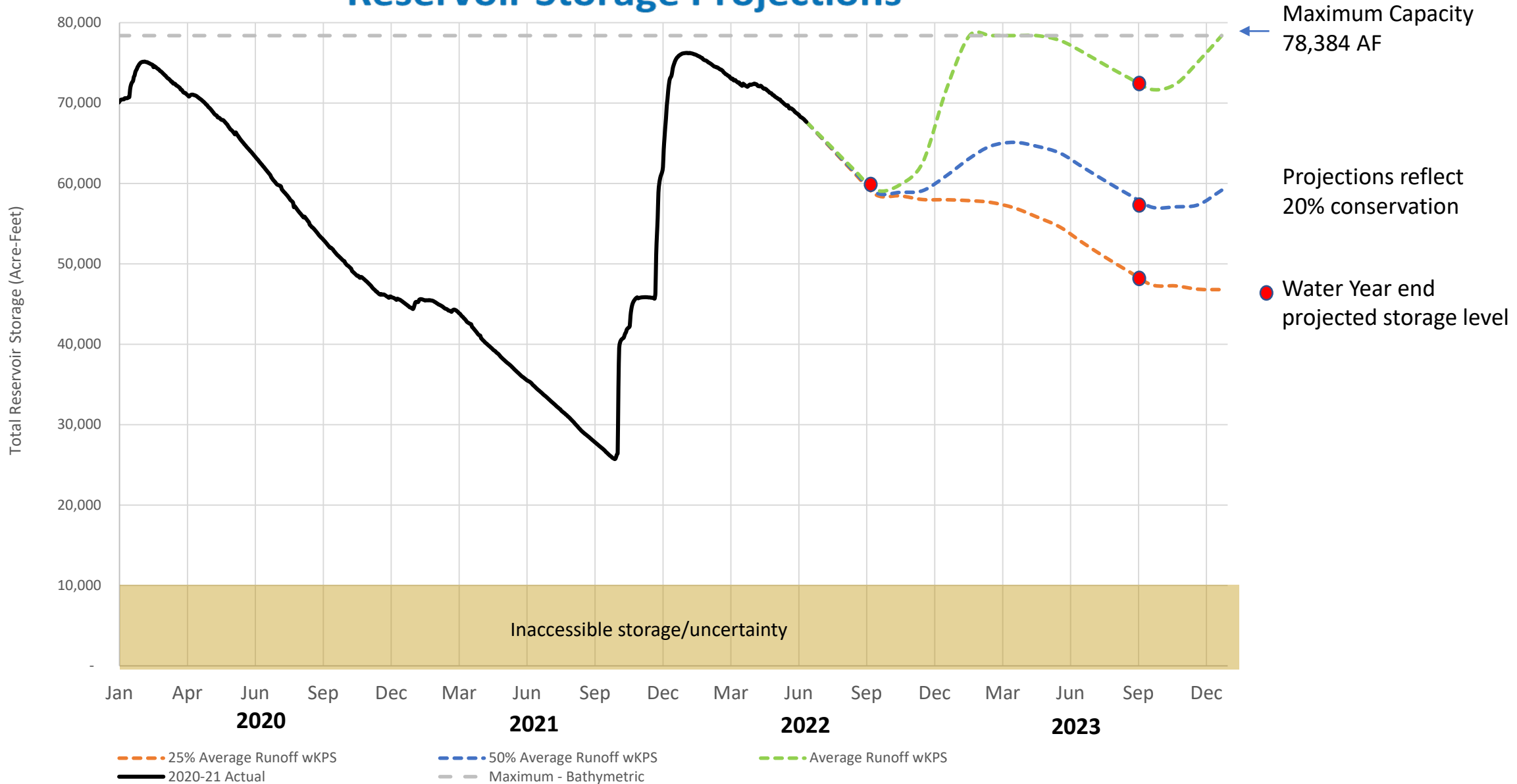
Drought Water Savings Tracker

Percent of water saved from July, 2021 - July, 2022, compared to the same period in 2020/21



State Water Savings Target: **15%**

Reservoir Storage Projections

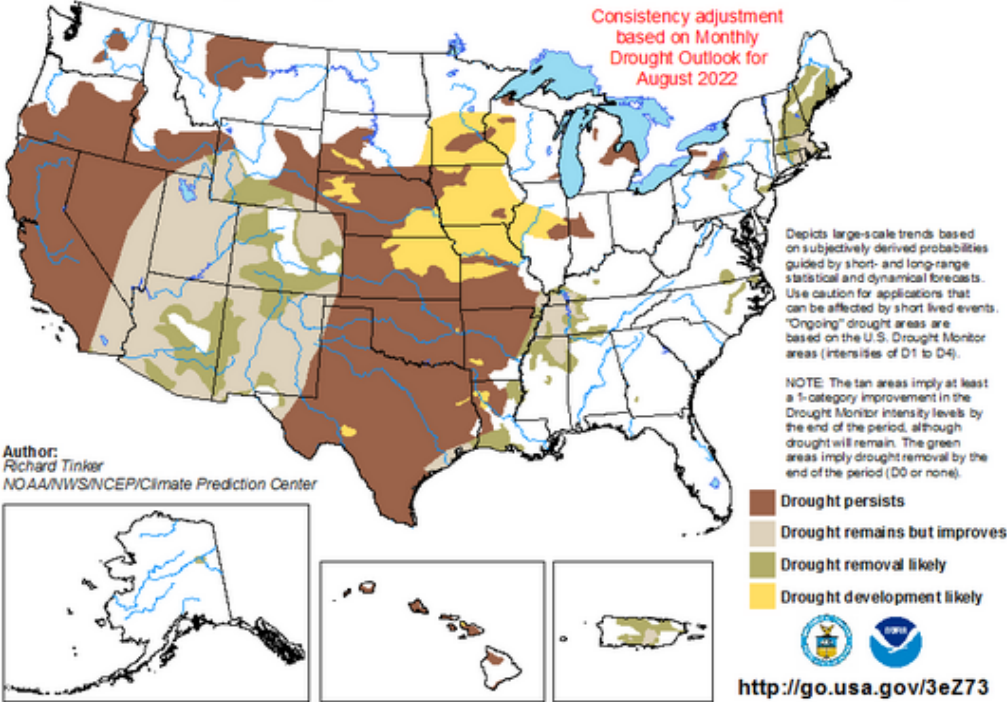


Water Supply Update: NOAA Drought Forecast

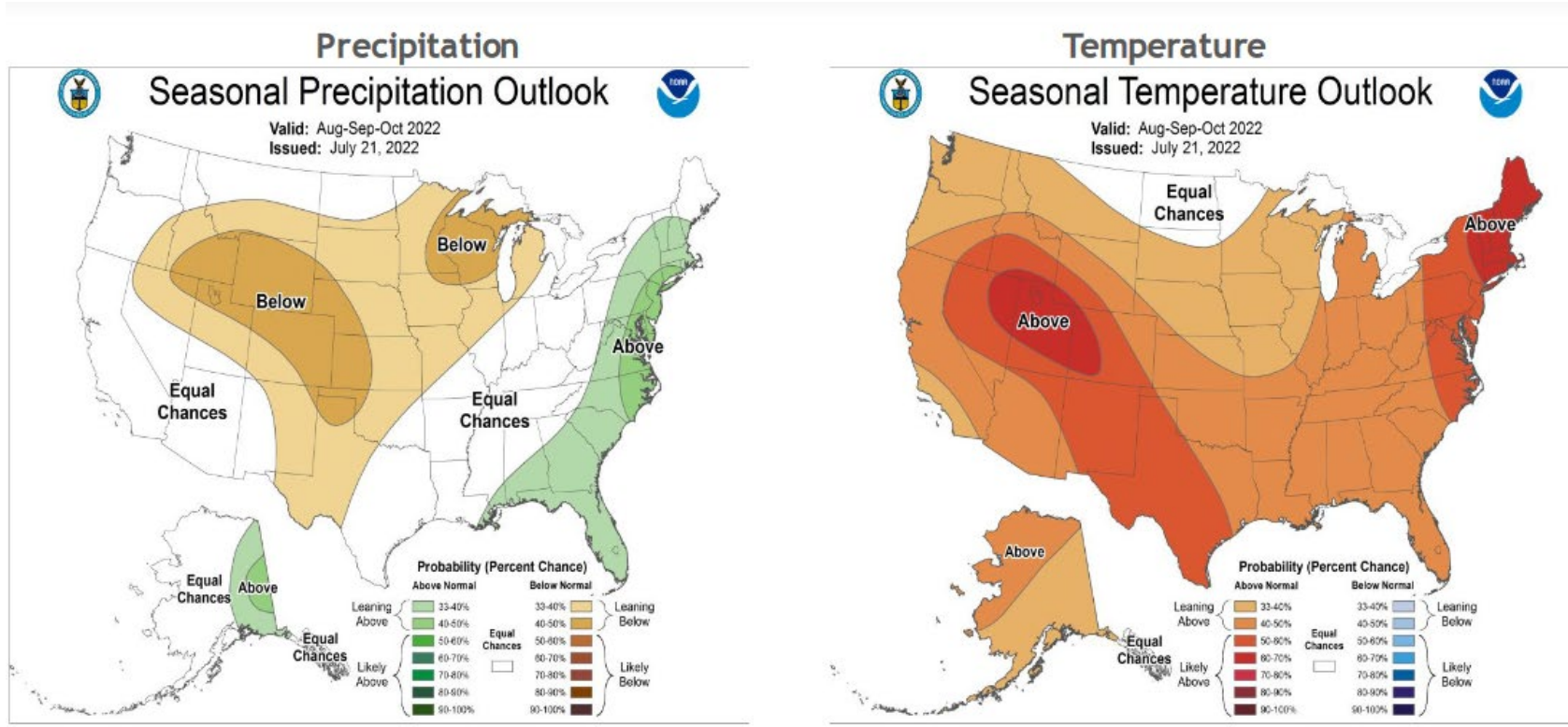
U.S. Seasonal Drought Outlook
Drought Tendency During the Valid Period

Valid for August 1 - October 31, 2022
Released July 31, 2022

Consistency adjustment
based on Monthly
Drought Outlook for
August 2022



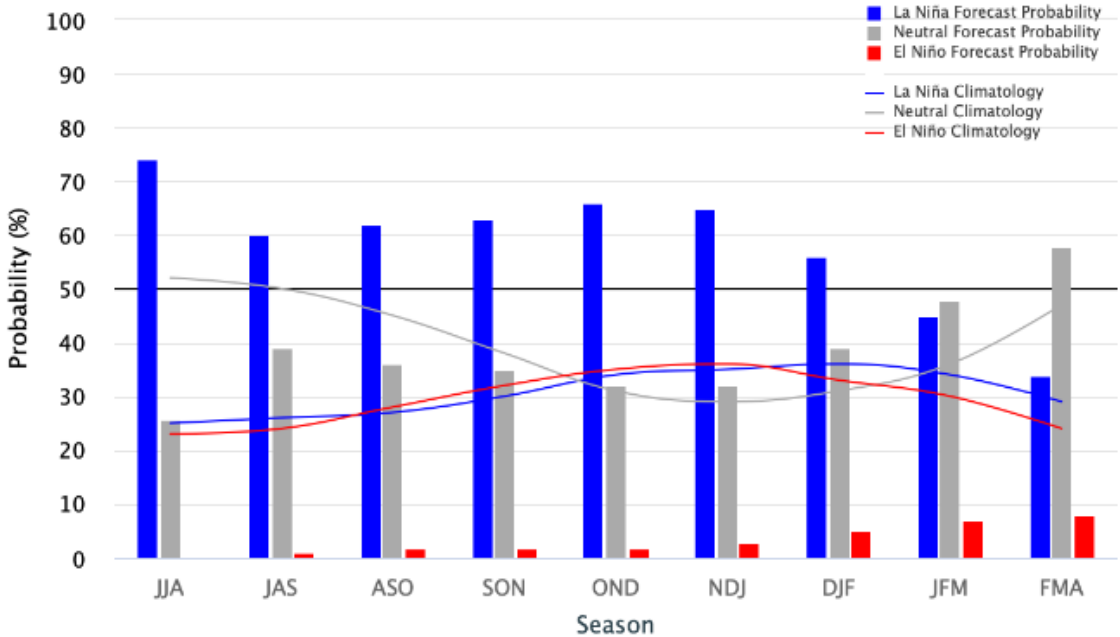
Water Supply Update: NOAA 3-Month Forecast



Water Supply Update: NOAA Long Range Forecast

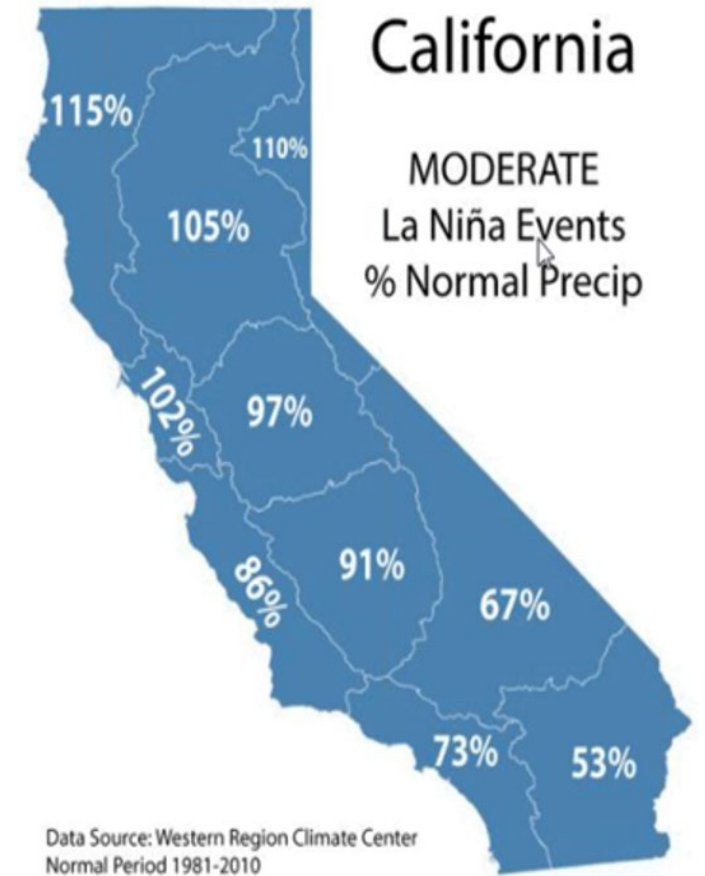
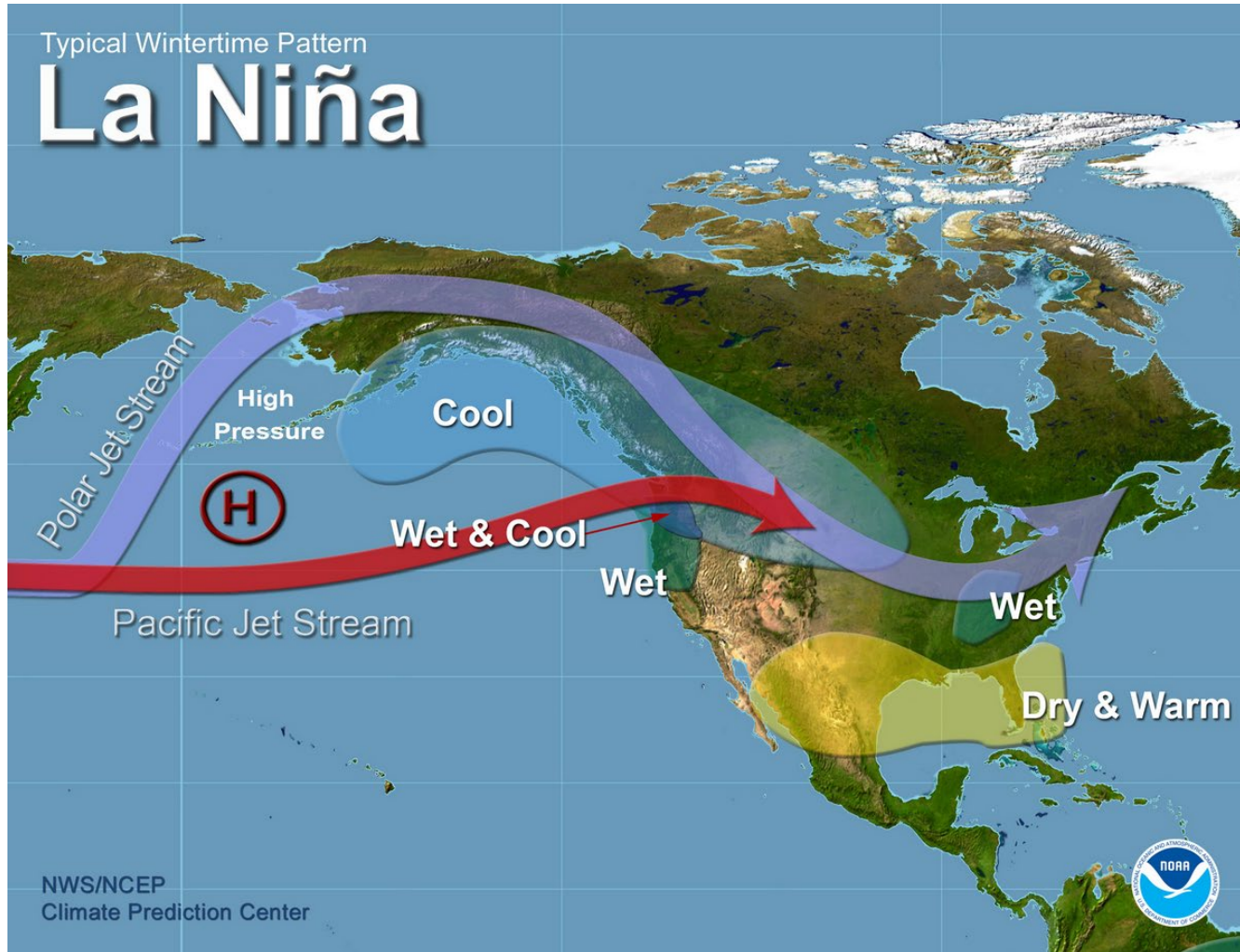
Early-July 2022 CPC/IRI Official Probabilistic ENSO Forecasts

ENSO state based on NINO3.4 SST Anomaly
Neutral ENSO: -0.5 °C to 0.5 °C



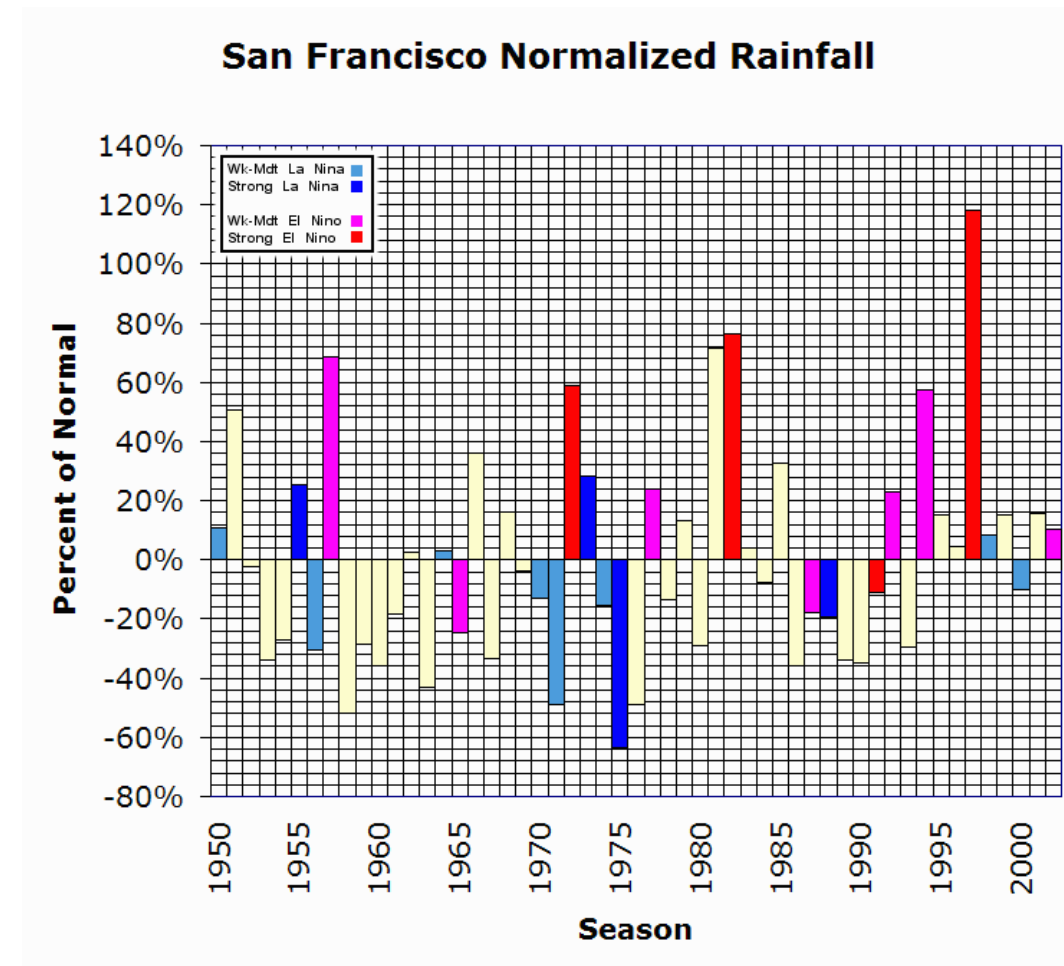
La Nina conditions predicted to continue into December 2022

Water Supply Update: Implications of La Niña

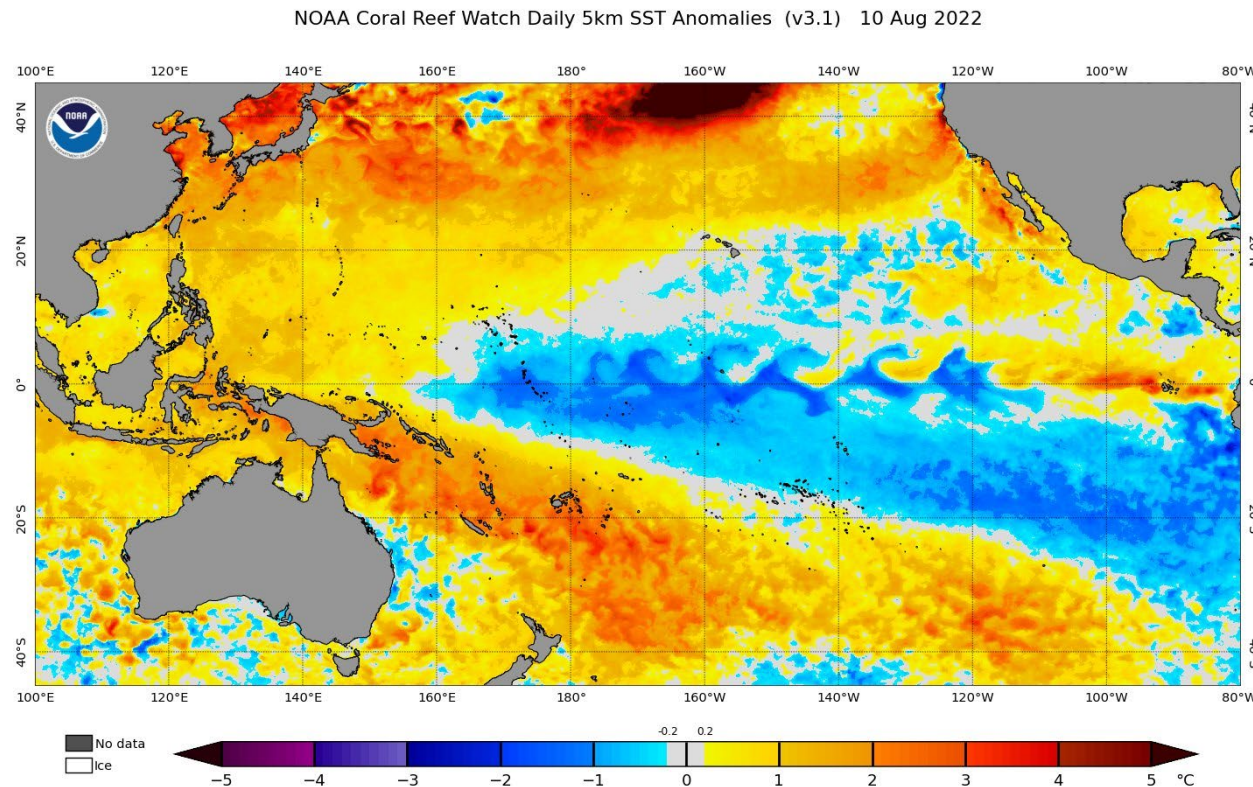


Water Supply Update: Does the presence of EL Nino/La Nina Conditions Allow Prediction of Precipitation in the Bay Area?

- **Golden Gate Weather Concludes:**
With the exception of the strongly positive rainfall anomaly in Southern California during strong El Niños the presence of either El Niño or La Niña is not a guarantee of either a significantly wet or dry year in California.



Water Supply Update: Weather West Blog



Daniel Swain: *Extraordinarily anomalous warmth across North Pacific, where there's a blob of +5-6C (9-10F!) SST anomalies. These are extremely large departures from oceanic perspective.*

Daniel Swain: *These unusually warm near shore temperatures in California are one of the reasons why it continues to be unusually humid in CA's lower elevation/coastal regions.*

Water Supply Update: Summary

- Drought conditions persisting across the West
- La Nina likely through December – no strong correlation to rainfall for Marin Water
- Continue to watch the anomalous temperatures in Pacific
- Reservoir storage is slightly above average for this time of year
- Storage is estimated to be 55 TAF to 60 TAF September 30, 2022
- Conservation levels remain at 25%