



Water Supply Update

Board of Directors

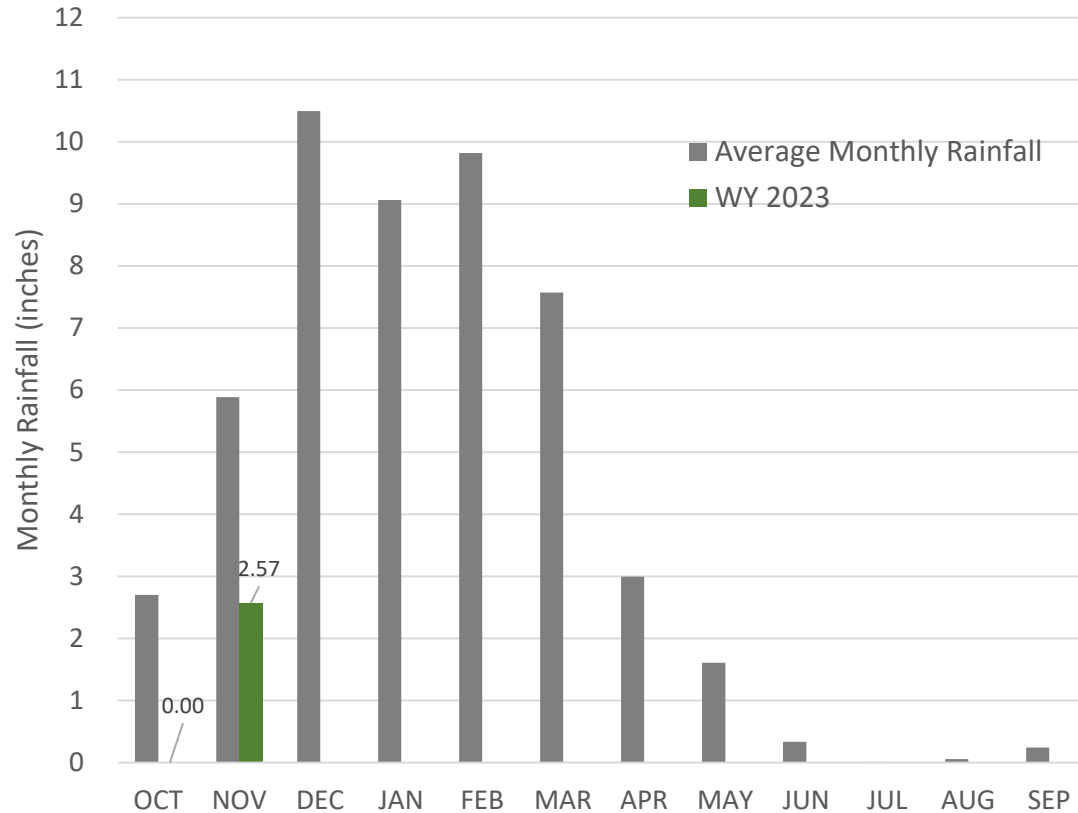
November 15, 2022



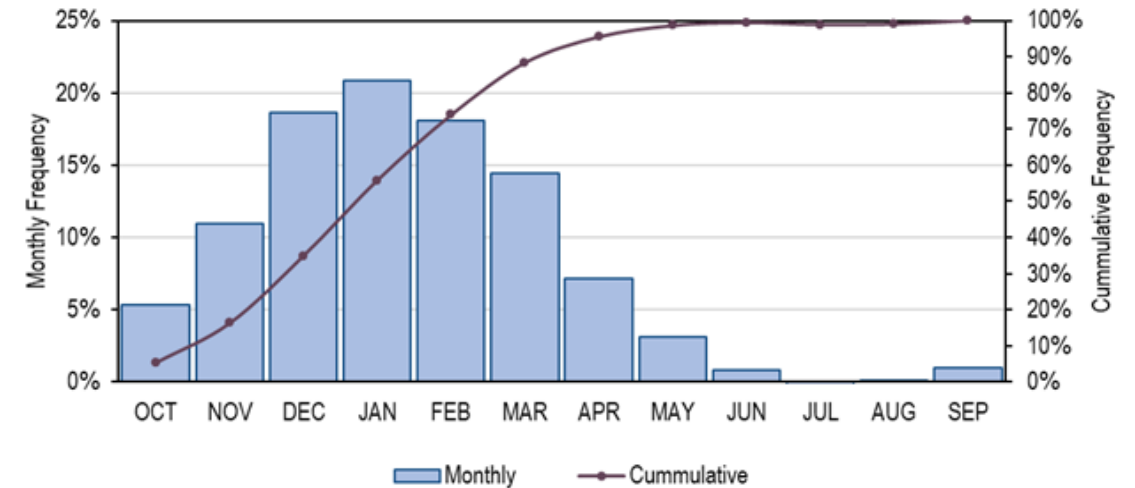
Water Supply Update: Overview

- Current Water Supply
- Water Supply Projection
- NOAA Forecast
- Strategic Water Supply Assessment Update
- Summary

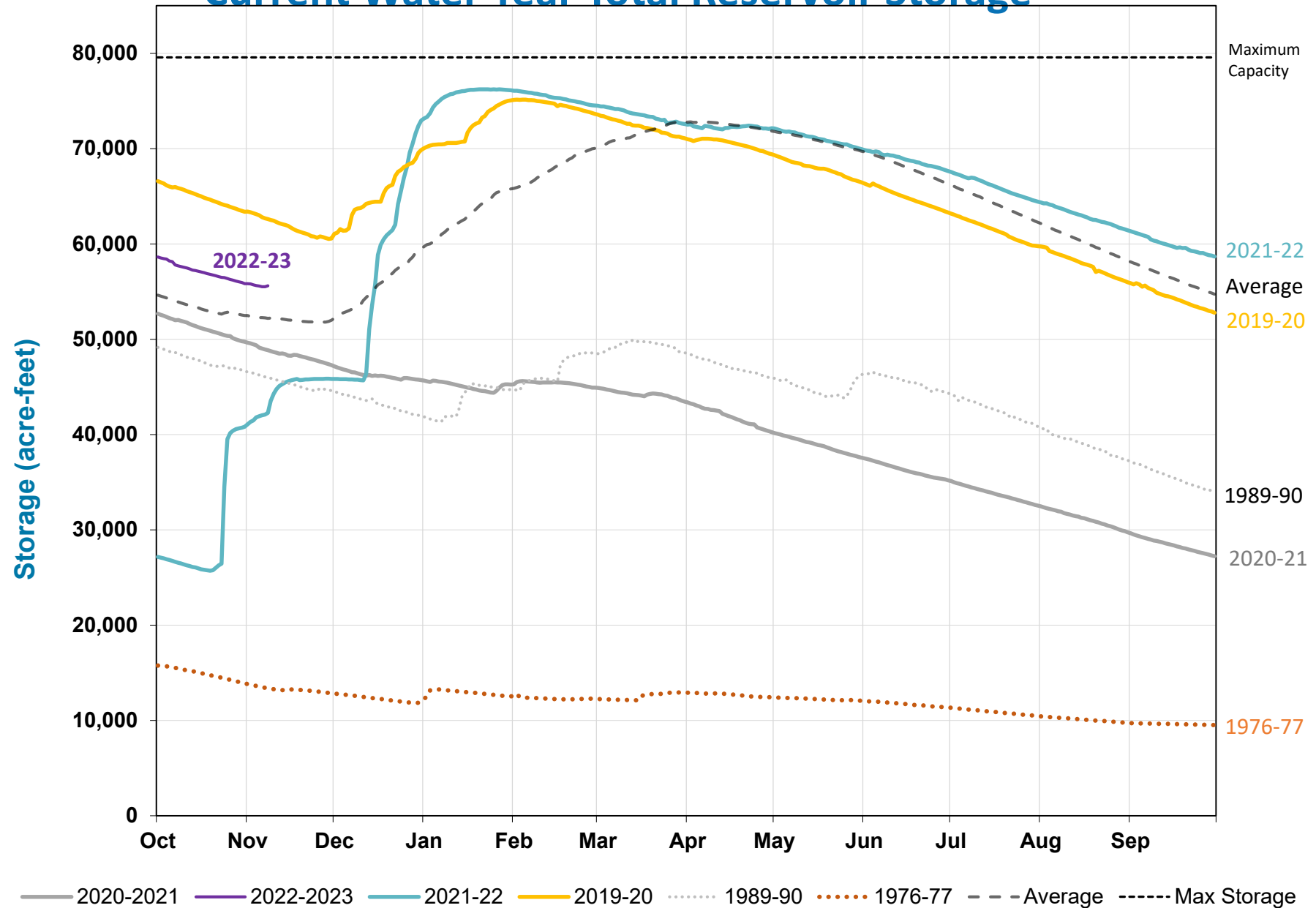
Water Supply Update: Monthly Rainfall Totals



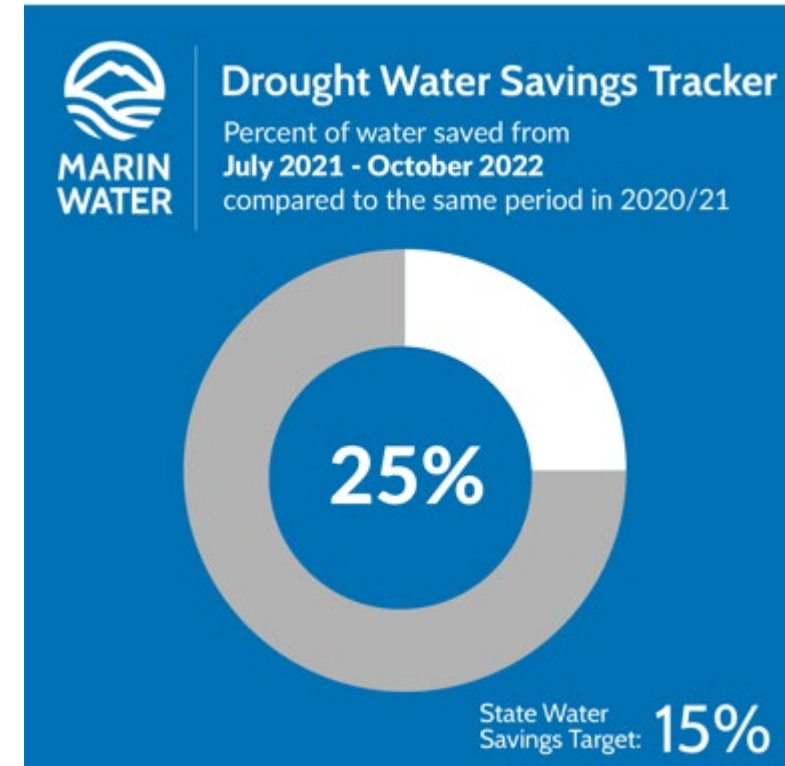
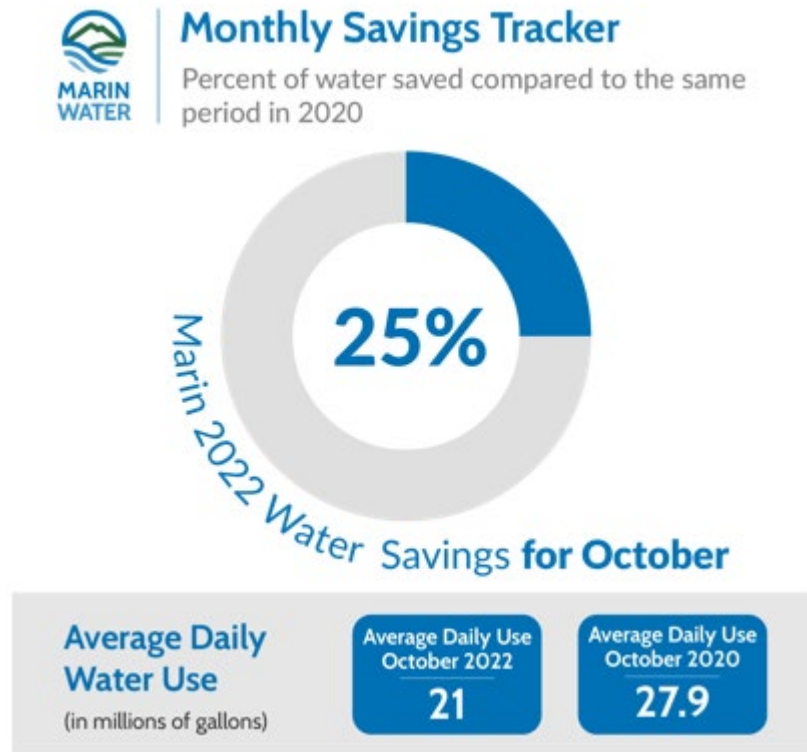
- Since Oct 1, 2022 – 2.57 inches
- Same period last year – 22.57 inches



Current Water Year Total Reservoir Storage

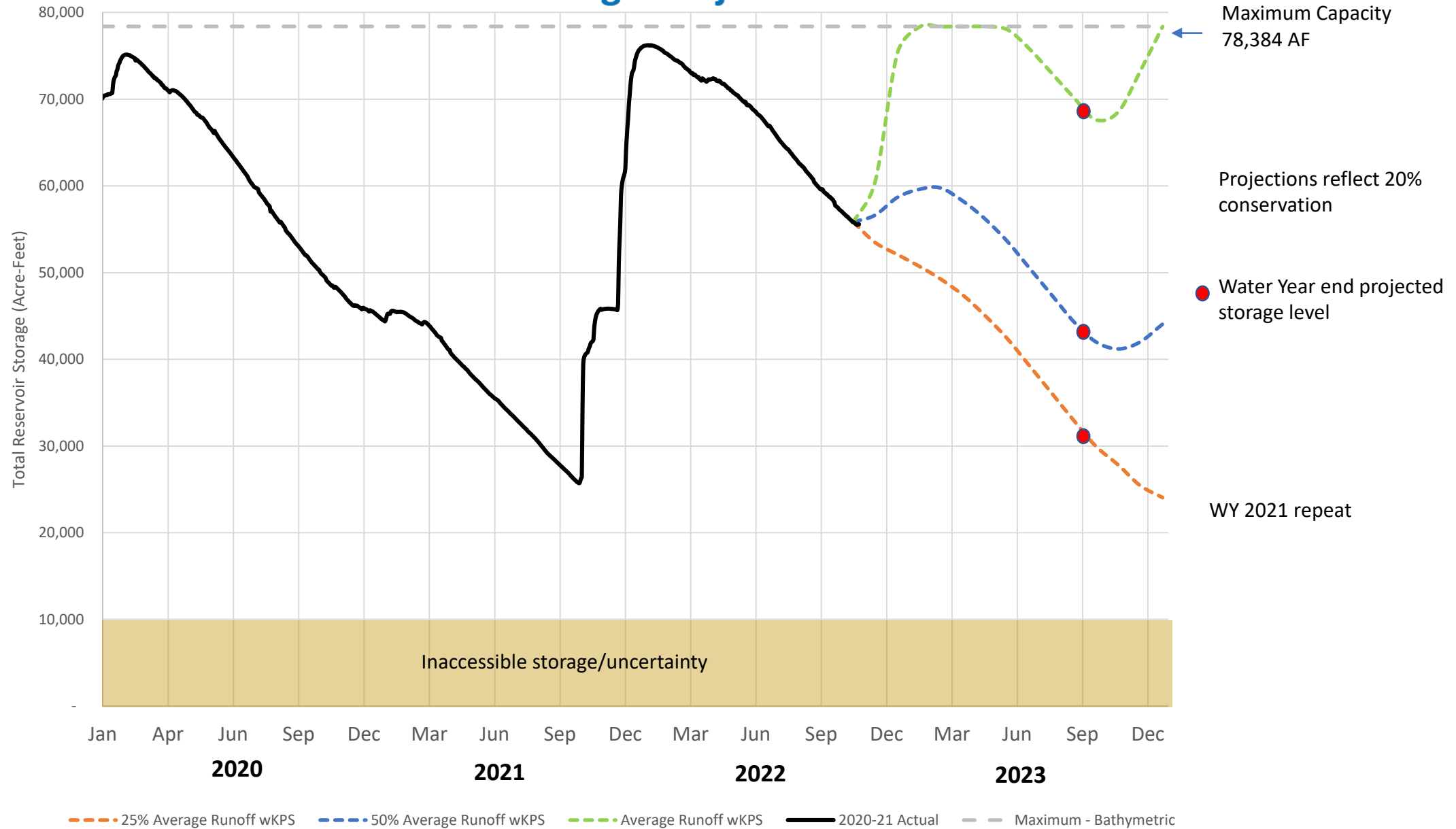


Water Supply Update: Water Use Savings

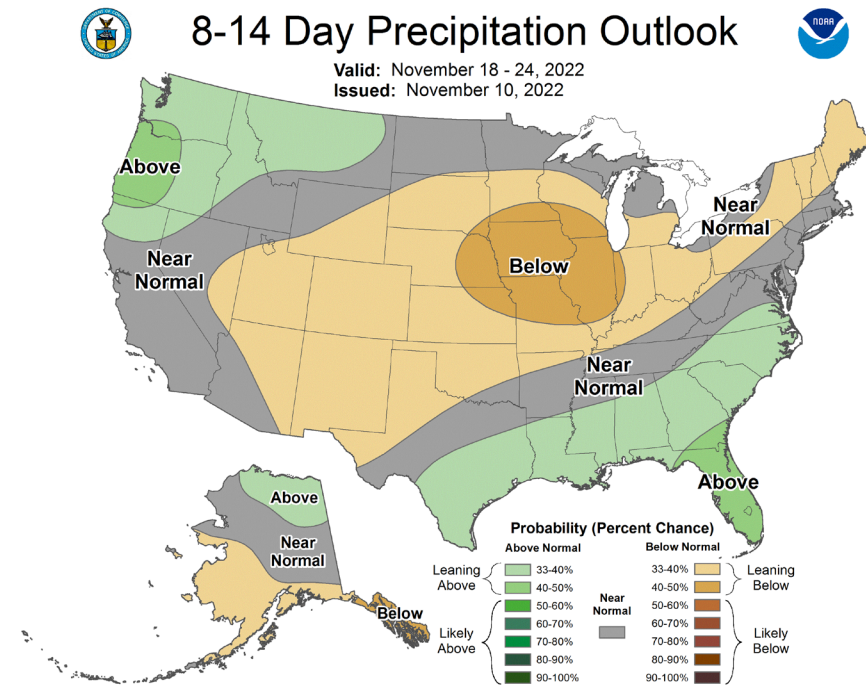
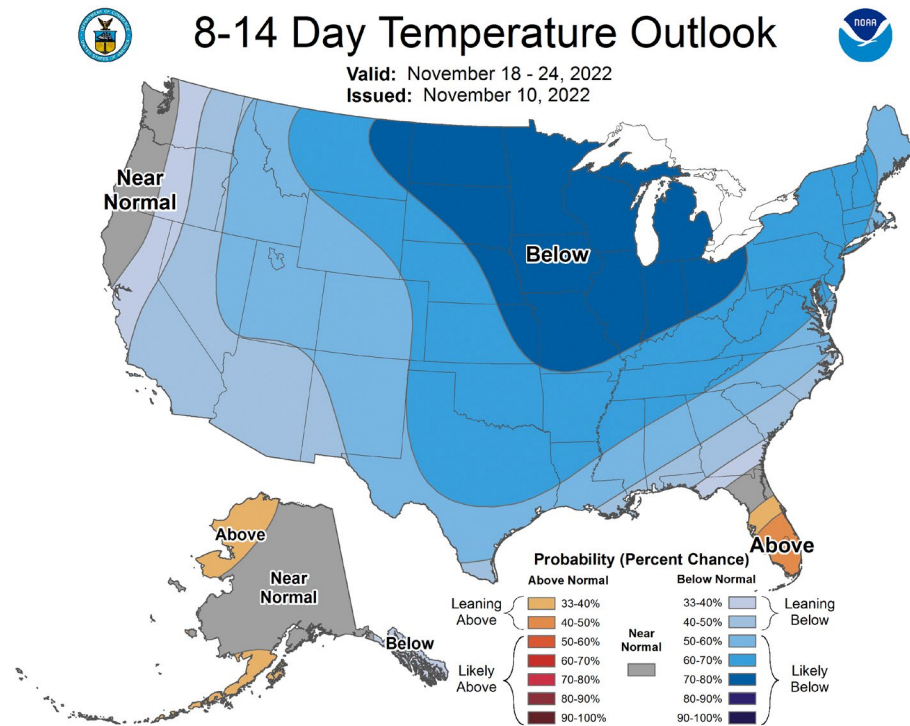


Water use in 2022 is 25% lower than in 2020 (state target is 15% reduction), yet higher than water use in 2021.

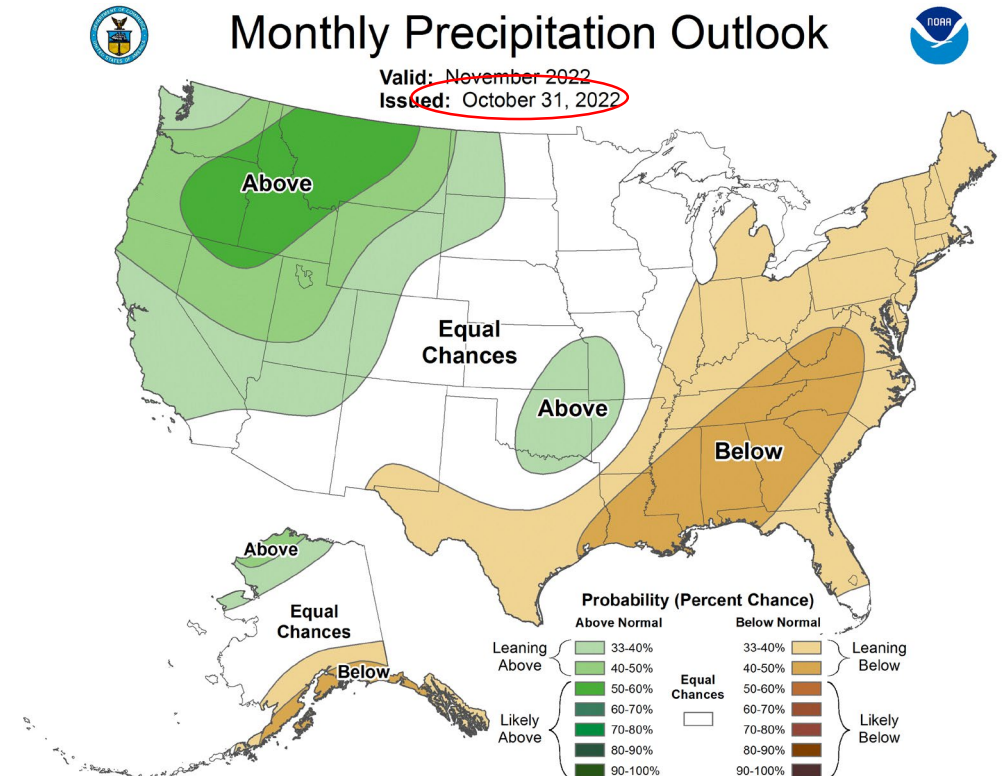
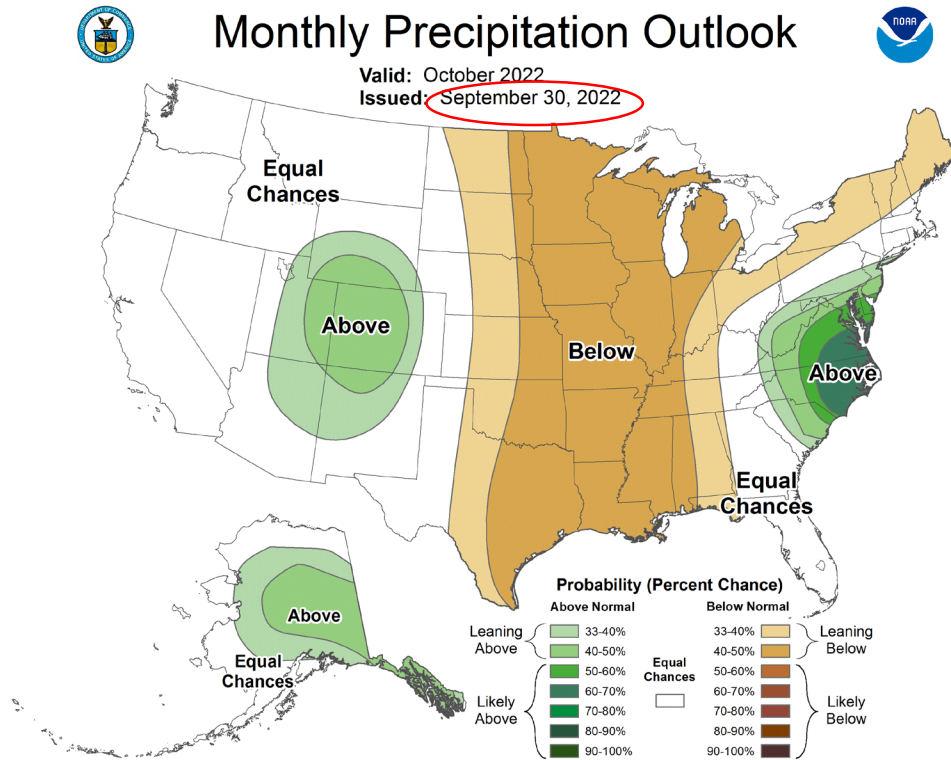
Reservoir Storage Projections



Water Supply Update: NOAA Short Term Forecast

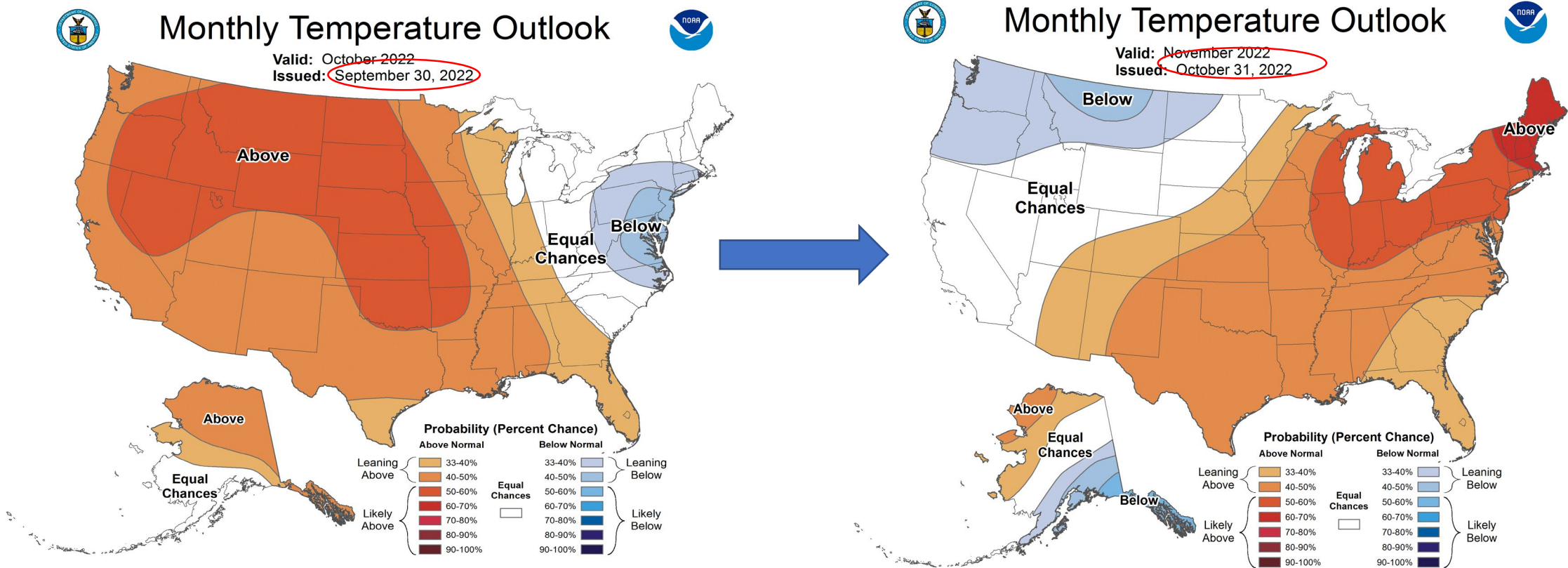


Water Supply Update: NOAA 1-Month Precipitation Outlook



Precipitation outlook probability “leaning above” normal

Water Supply Update: NOAA 1-Month Temperature Outlook



Temperature outlook probability is equal

Water Supply Update: NOAA Seasonal Precipitation Outlook

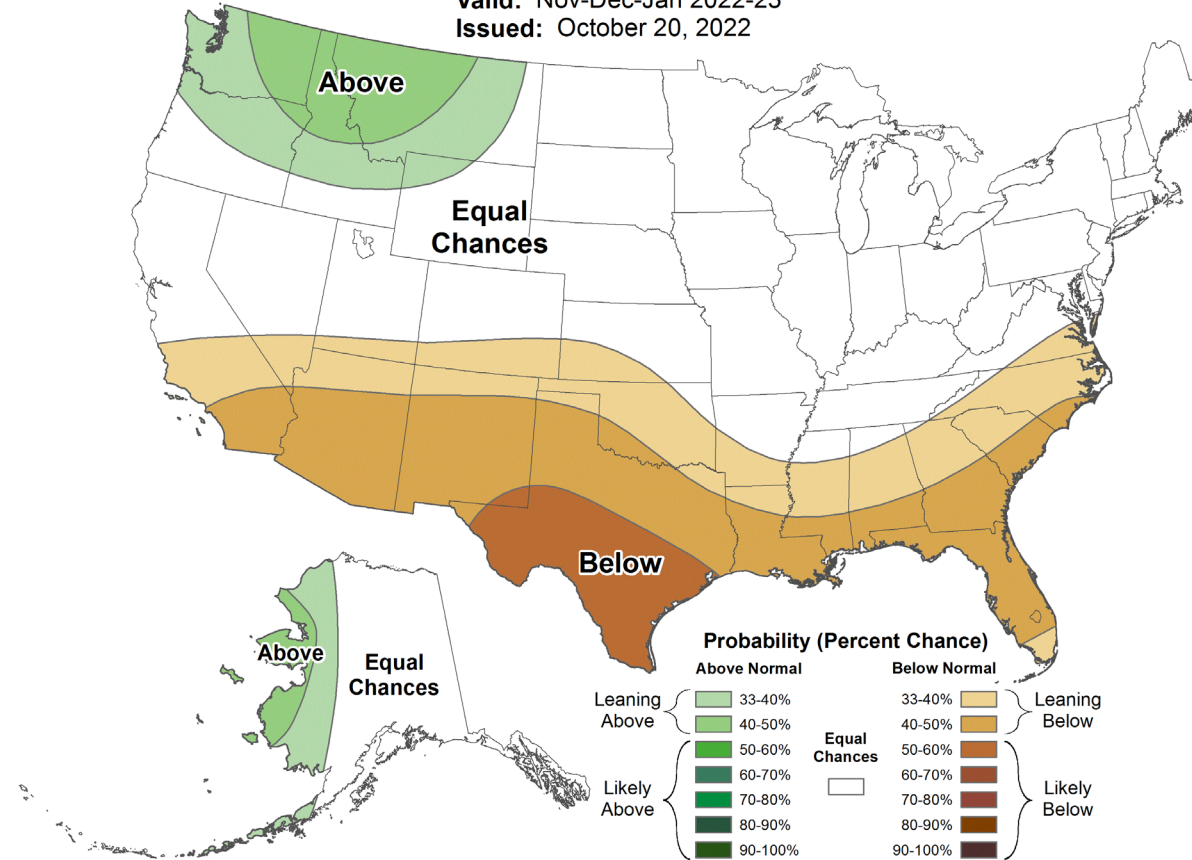


Seasonal Precipitation Outlook



Valid: Nov-Dec-Jan 2022-23

Issued: October 20, 2022



Strategic Water Supply Assessment: Status Update

- Work Underway:
 - Developing technical report
 - Review of conservation as water management alternative by Maddaus
 - Initial portfolios and strategies for discussion
- Schedule:
 - December (TBD) – Draft Portfolios and Strategies
 - January (TBD) – Recommended Roadmap(s)

Summary & Next Steps

- Drafting the technical report on The Strategic Water Supply Assessment
- If dry conditions continue through December considerations include:
 - Continue to maximize supplemental water
 - Pumping Phoenix Lake and Soulaajule reservoir
- Reservoir storage is 106% average for this time of year
- Storage is estimated to be 52 TAF to 58 TAF December 1, 2022
- Conservation levels remain at 25% compared to 2020